

WELLINGTON INTERNATIONAL AIRPORT

LANDSCAPE BUFFER ZONE - DEVELOPED CONCEPT

PREPARED FOR WELLINGTON INTERNATIONAL AIRPORT LTD

20TH FEBRUARY 2025



CONTENTS:

INTRODUCTION/INSPIRATION	3
DESIGN PRINCIPLES	4
LANDSCAPE BUFFER ZONE MASTERPLAN	5
RECREATION/INTERPRETATION HUB A	6
RECREATION/INTERPRETATION HUB B	7
RECREATION HUB A VISUALISATIONS	8-9
SCULPTURE OPPORTUNITY VISUALISATION	10
MATERIALS PALETTE	11
PLANTING TYPOLOGIES	12-13

INTRODUCTION/INSPIRATION:

Introduction

The landscape masterplan for Wellington International Airport has been thoughtfully developed to offer recreational opportunities for both visitors and local residents. The design principles align with the objectives of the Landscape Visual Mitigation Plan, providing a buffer for the airport’s expansion. This concept not only includes connections to existing reserves (pending council approval) but also embraces the opportunity to share the Pūrākau of the whenua, as expressed in the Tohu created for WIAL by Manukorihi Winiata of Ngāti Raukawa, Te Āti Awa, Ngāti Awa, and Ngāti Tūwharetoa. The Landscape Buffer Zone invites visitors and residents to connect with the land and learn about this treasured Taonga, shared by Kura Moeahu (QSO), a rangatira of Ngā Ruahine, Te Āti Awa, Taranaki–Tuturu, Ngāti Mutunga, Ngāti Tama, and Ngāti Toa

Te Manu Muramura

Te Manu Muramura pattern is a free-flowing formless design that depicts the pathways of the sky and the winds. The negative space between the lines speaks to the movement of the winds created by the wings of Te Manu Muramura when in full flight.

Whātaimai

Whātaimai—Tupua Horo Rangi (top figure)—is acknowledged as the tupua who spiritually transformed into Te Manu Muramura. Whātaimai is also known for feasting on fresh water kai and, after Ngake escaped, bringing in kaimoana to eat. The feasting can be seen in the mouth of Whātaimai containing the ārero (tongue) and kai from both sea water and fresh water on either side

Ngake

Ngake—Tupua Horo Nuku (bottom figure)—is acknowledged as being energetic and determined. These qualities are captured in the way Ngake is biting down, suggesting grit and determination to break free from the harbour lake. The two sharp points on the head of Ngake represent the land bank broken apart, allowing fresh water out and sea water in.

Papatūānuku

Haehae—the scarring of Papatūānuku by the two tupua Ngake and Whātaimai—is represented here. The scarring of the land speaks to a series of events that created the landscape and surrounding water tributaries that feed into the harbour today

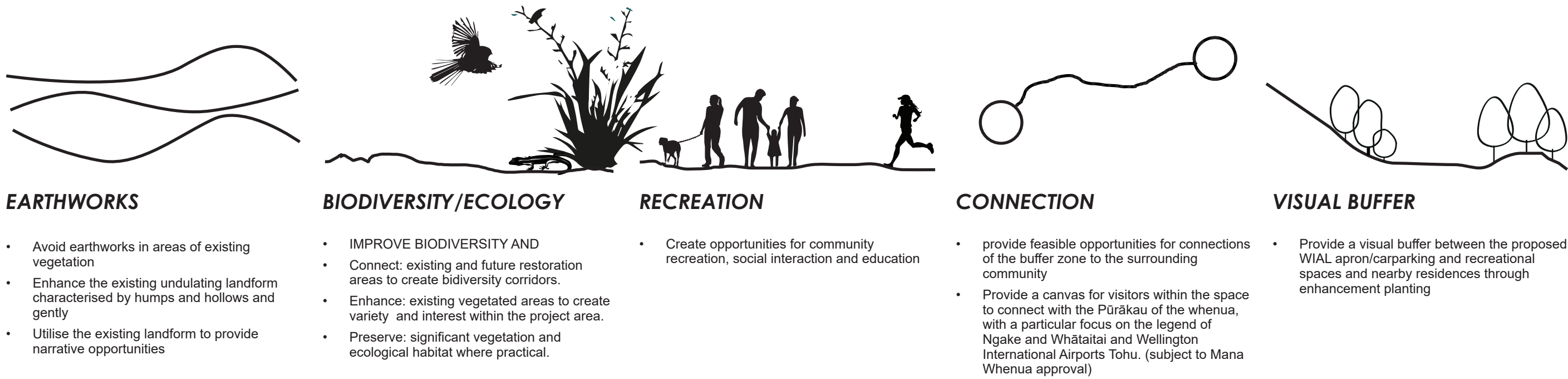
Niho Taniwha

The inside notches are inspired by the pattern Niho Taniwha which speaks to strength and stability. It shows the power of both tupua in reshaping the geographical area of Te Upoko O Te Ika, starting from the pito (center of the earth) and out to the sea, the land, and then the sky.

Ranginui

The positive flowing lines are the pathways of the sky. The aspect of movement is reinforced by the use of the Puhoro pattern. The element of growth and ascension to the sky is illustrated with the use of the koru

DESIGN PRINCIPLES:



LANDSCAPE BUFFER ZONE MASTERPLAN:



Existing Contours; Final contour levels to be confirmed. Utilisation of additional soil from adjacent works areas may be considered. Any additional topsoil replacement shall be sympathetic to the existing undulations.

LEGEND

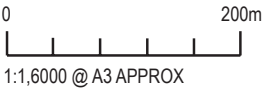
- Site boundary
- ① Rental Carpark - Design still to be confirmed
- ② Wellington Airport Carpark
- ③ Shared pathway connections with carpark
- ④ Miramar Links Golf Course
- ⑤ Path alignment to Raukawa Street to be agreed with adjacent landowners
- ⑥ Eastside Area Development Future Stages - Design TBC
- ⑦ Path alignment to Raukawa Street and Tukanāe Street Reserve to be agreed with adjacent landowners

Soft Landscape: Refer to Planting Typologies sheets 12 + 13

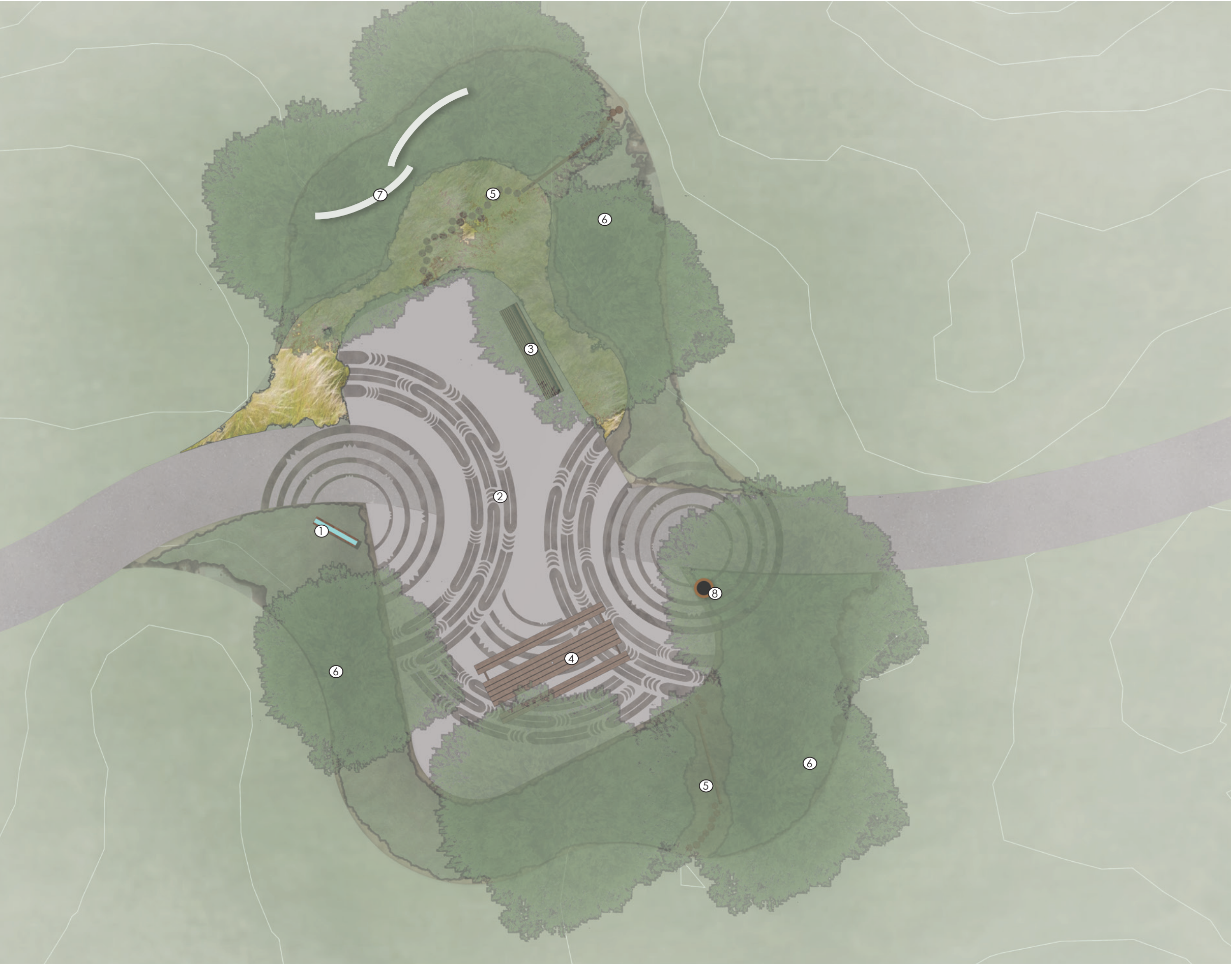
- A** Amenity/Buffer Area Planting:
- B** Damp Area Planting:
- C** Grassland Area Planting:
- D** Existing Planting:
- E** Trees. All existing to be retained:
- F** Grass areas/open space.

Hard Landscape: Refer to Materials Palette sheet 11

- Footpath: 3m wide shared pathway. Broom finished concrete (plain) or asphalt
- Sculptural panels conveying story of the Whenua (content to be confirmed). Refer to sheet 10



RECREATION/INTERPRETATION HUB A:



LEGEND

Existing Contours; Final contour levels to be confirmed. Utilisation of additional soil from outside the buffer zone may be considered. Any additional topsoil shall be placed sympathetic to the existing undulations under the direction of the Landscape Architect to ensure the Landscape Character shall be retained.

Soft Landscape

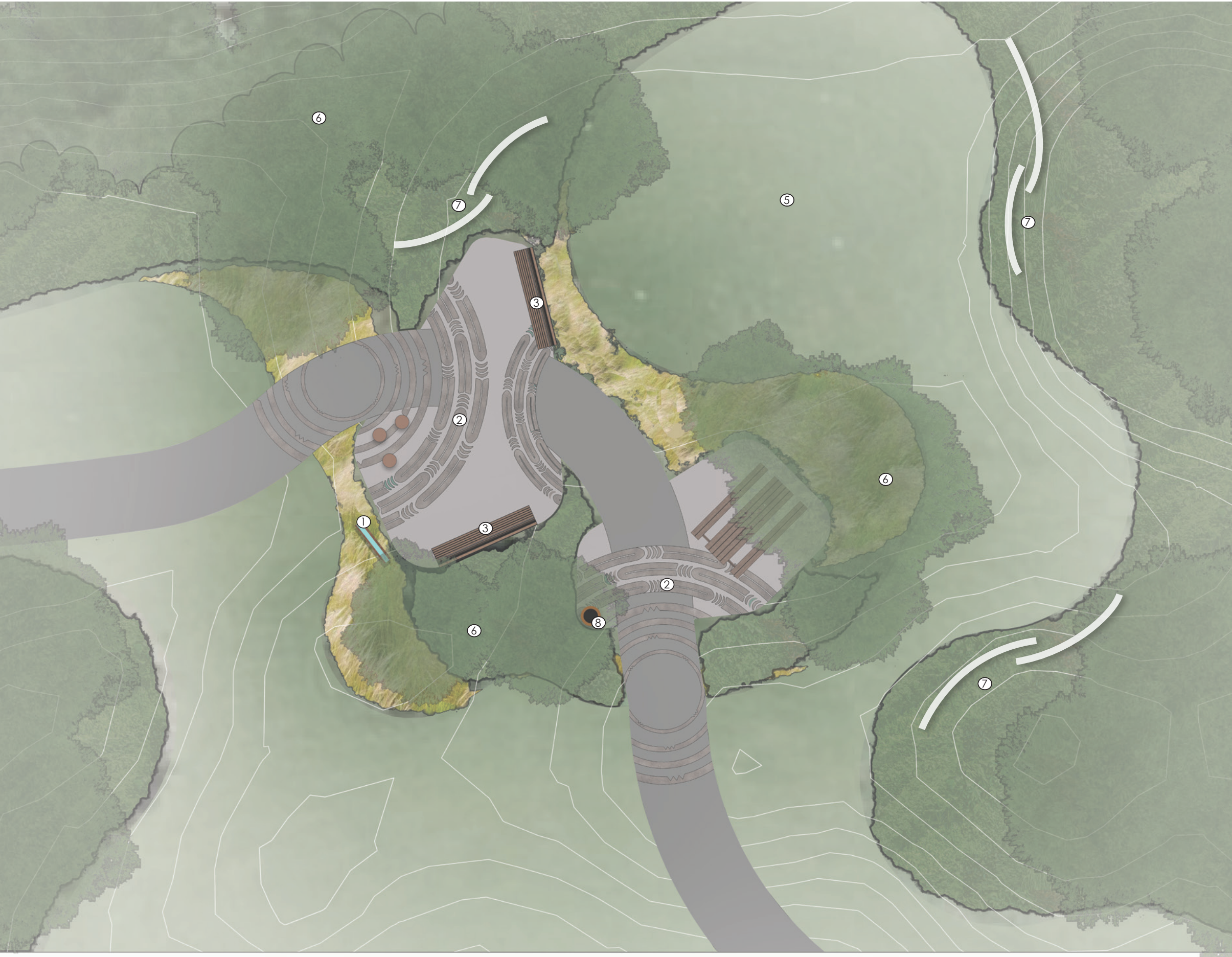
- Grass areas/open space.
- Footpath: 3m wide shared pathway. Broom finished concrete (plain) or asphalt
- Grassland Area Planting:
- Amenity/Buffer Area Planting:

Hard Landscape

- ① Interpretation panel: Corten steel or similar with text extracts from WIAL branding to tell story of the land.
- ② Vapour blast concrete with Kowhaiwhai pattern derived from Wellington airport tohu depicting the purakau of the formation of the land
- ③ Seating: Urban Effects 'Moda' seating with back and armrests. Refer to Materials Palette
- ④ Picnic Table: Urban Effects 'Moda' Picnic table with wheelchair access. Refer to Materials Palette
- ⑤ Timber play features: Stepping logs and balance beams through planting
- ⑥ Specimen Tree Planting: Large grade trees top frame pause park and enhance and direct views
- ⑦ Opportunity for prominent sculpture feature on elevated ground and backlit for view from WIAL areas. Possibility to use Whataitai sculpture in this location
- ⑧ Rubbish Bin



RECREATION/INTERPRETATION HUB B:



LEGEND

Existing Contours; Final contour levels to be confirmed. Utilisation of additional soil from outside the buffer zone may be considered. Any additional topsoil shall be placed sympathetic to the existing undulations under the direction of the Landscape Architect to ensure the Landscape Character shall be retained.

Soft Landscape

- Grass areas/open space.
- Footpath: 3m wide shared pathway. Broom finished concrete (plain) or asphalt
- Grassland Area Planting:
- Amenity/Buffer Area Planting:

Hard Landscape

- ① Interpretation panel: Corten steel or similar with text extracts from WIAL branding to tell story of the land.
- ② Vapour blast concrete with Kowhaiwhai pattern derived from Wellington airport tohu depicting the purakau of the formation of the land
- ③ Seating: Urban Effects 'Moda' seating with back and armrests. Refer to Materials Palette
- ④ Picnic Table: Urban Effects 'Moda' Picnic table with wheelchair access. Refer to Materials Palette
- ⑤ Grass picnic area
- ⑥ Specimen Tree Planting: Large grade trees top frame pause park and enhance and direct views
- ⑦ Opportunity for prominent sculpture feature on elevated ground and backlit for view from WIAL areas. Possibility to use Whataitai sculpture in this location
- ⑧ Rubbish Bin



RECREATION/INTERPRETATION HUB A VISUALISATIONS:



RECREATION/INTERPRETATION HUB A VISUALISATIONS:



SCULPTURE OPPORTUNITY VISUALISATION:



NATIVE MASS PLANTING - LOW TO MEDIUM
HEIGHT TO ALLOW FOR DISTANT VIEWS WITH
SCULPTURAL ELEMENTS

MOWN GRASS

WALKWAY

MOWN GRASS

NATIVE MASS PLANTING - TO
ADJACENT SLOPE

MATERIALS PALETTE:



CULTURAL WAYFINDING



AIRPORT WAYFINDING



DECORATIVE PAVING PATTERNS



PLAY FEATURES



LIGHTING



SEATING



PICNIC SEATING



SCULPTURE FEATURE

PLANTING TYPOLOGIES:

TREE SPECIES :



Lancewood
Pseudopanax crassifolius



Akeake
Dodonea viscosa



Cabbage Tree
Cordyline australis



Kohekohe
Didymocheton spectabile



Rewarewa
Knightia excelsa



Griselinia littoralis



Pohutakawa
Metrosideros excelsa



Akiraho
Olearia paniculata



Kanuka
Kunzea ericoides



Manuka
Leptospermum scoparium



Mapou
Myrsine australis

ABAP: AMENITY/BUFFER AREA PLANTING

Option 2 offers low / medium sized planting, which focuses more on maintaining views across the landscape from adjacent properties.



Sand coprosma
Coprosma acerosa



Mingimingi
Coprosma crassifolia



Koromiko
Veronica elliptica



Shrubby Tororaro
Muehlenbeckia astonii



Mountain Flax
Phormium cookianum



Knobby Club Rush
Ficinia nodosa



Silver Tussock
Poa cita



NZ Iris
Libertia peregrinans



Renga Renga Lily
Arthropodium cirratum



Oioi
Apodasmia similis



Makura sedge
Carex secta

PLANTING TYPOLOGIES:

DAP: DAMP AREA PLANTING

Located within existing depressions within the site where water may naturally accumulate and create ephemeral/temporary damp spots



Oioi

Apodasmia similis



Makura sedge

Carex secta



Knobby Club Rush

Ficinia nodosa



Mountain Flax

Phormium cookianum

GAP: GRASSLAND AREA PLANTING

Located within existing depressions within the site where water may naturally accumulate and create ephemeral/temporary damp spots



Sand coprosma

Coprosma acerosa



Mingimingi

Coprosma crassifolia



Shrubby Tororaro

Muehlenbeckia astonii



Silver Tussock

Poa cita



NZ Iris

Libertia peregrinans