



# Wellington Airport

## Noise Compliance Reporting

March, April and May 2024

1. Noise Enquiries Received and Response
2. Noise Enquiries Graph
3. Curfew Movements Graph
4. Noise (Ldn) Compliance Graph
5. Monthly Monitoring Reports from Envirosuite Pty Limited

As reported to the  
**Air Noise Management Committee**

10 June 2024

## Noise Enquiries Summary \*

Date	Time	Suburb	Query	Source / Action	Category
18/03/2024		Karori	Complained of three separate aeroclub flights circling Karori in the afternoon.	Explained that the airport has no jurisdiction over chosen flight paths of aircraft. Directed the complainant to Wellington Aeroclub for an explanation of the chosen flight paths.	OVR
29/03/2024		Ngaio	Plane louder than normal. Wanted to know if this was an unusual flight path.	Explained that flight was in accordance with CAA rules, within normal flying hours so out of control for Airport. Recommended contacting Airways for more information on flight paths/ how air traffic is managed.	OVR
6/04/2024	12:40am	Hataitai	Plane landing at 12:40am - during what complainant believed to be the curfew period.	Explained the flight in question was international and therefore was within the permitted hours for Wellington Airport.	OVR
20/04/2024	2:50am	Miramar	Helicopter flying overhead	Explained the flight in question was an air ambulance and outlined curfew exemptions.	CUR
20/04/2024		Brooklyn	Noisier overhead flights, wants to know if the flight path has changed.	Explained that flight paths are out of control for Airport and recommended contacting Airways for more information on flight paths.	OVR
4/05/2024	12:43am	Johnsonville	Flight landing past 11pm and thought the curfew begins from this time.	Outlined the curfew to complainant and explained the Airport has no control or jurisdiction over the timing of flights, as long as they are within the allowable hours. Suggested they get in touch with the airline concerned if they believe they are not taking enough care to reduce noise for residents/ are not arriving at scheduled time.	OVR
8/05/2024	5:38am	Ngaio	Early morning flight woke them up.	Flight was associated with a medical emergency. Outlined curfew and exemptions to this, which includes medical flights.	CUR
8/05/2024	6:04am	Ngaio	Flight louder than usual with the noise of the steep climb disturbing them.	Explained that flight was in accordance with CAA rules, within normal flying hours so out of control for Airport.	OVR
12/05/2024		Miramar	Recently moved to new address and concerned about aircraft noise, particularly in the early morning and late at night.	Explained Airport has a flight curfew and also Quieter Homes programme which complainant does not qualify for. Directed them to Airport Noise webpage which outlines further management and monitoring measures for noise.	OTH

\* Complaints relating to the new Divergent Missed Approach Flight Path (DMAPS) are recorded in a separate complaints register

GPU - GPU/APU use

MNT - WIAL Maintenance works

ENG - Engine testing

SIN - single noisy aircraft movement

CUR - airport movement during curfew hours

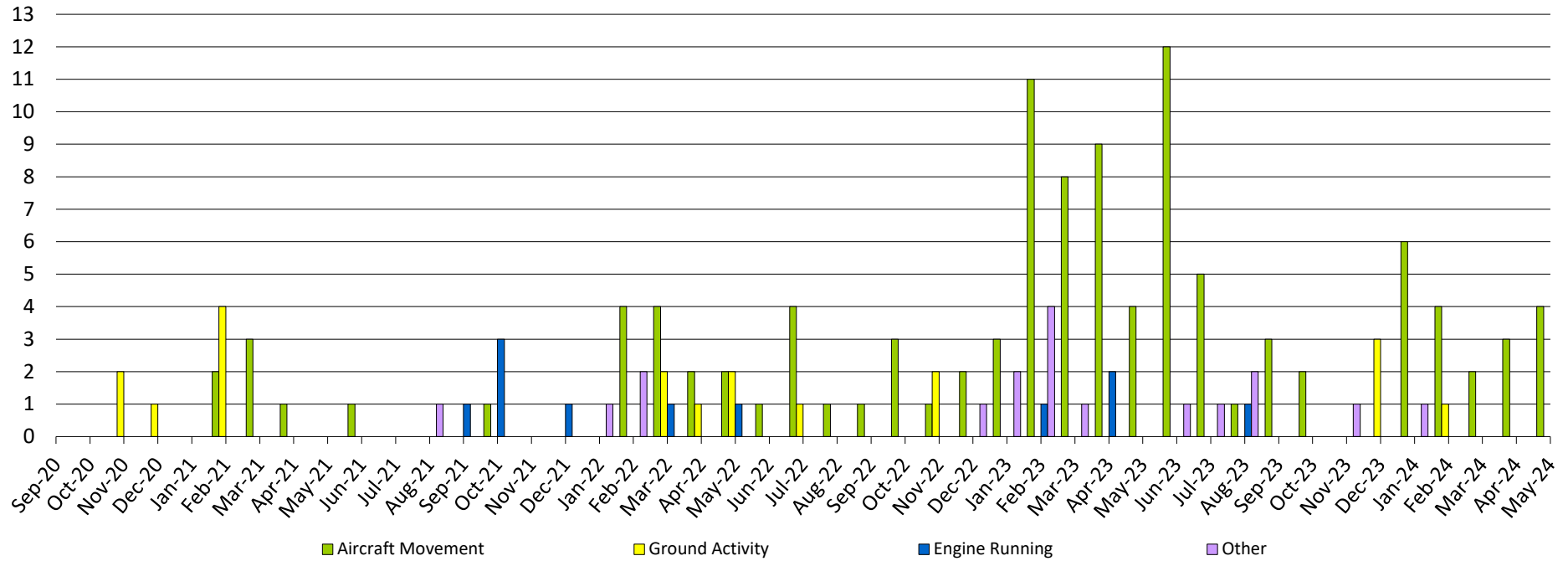
OVR - overflight/holding/circling aircraft

CAA - low flying/safety complaints

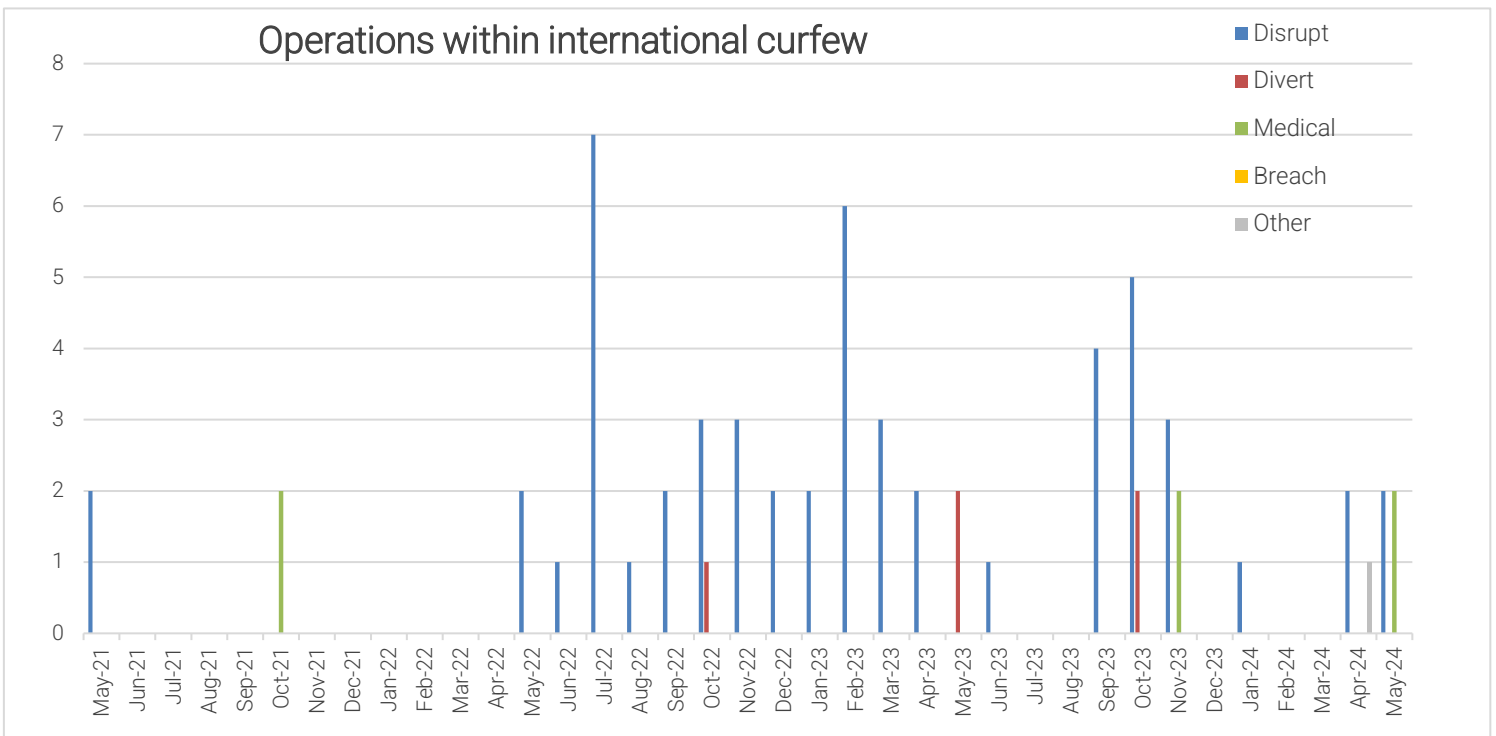
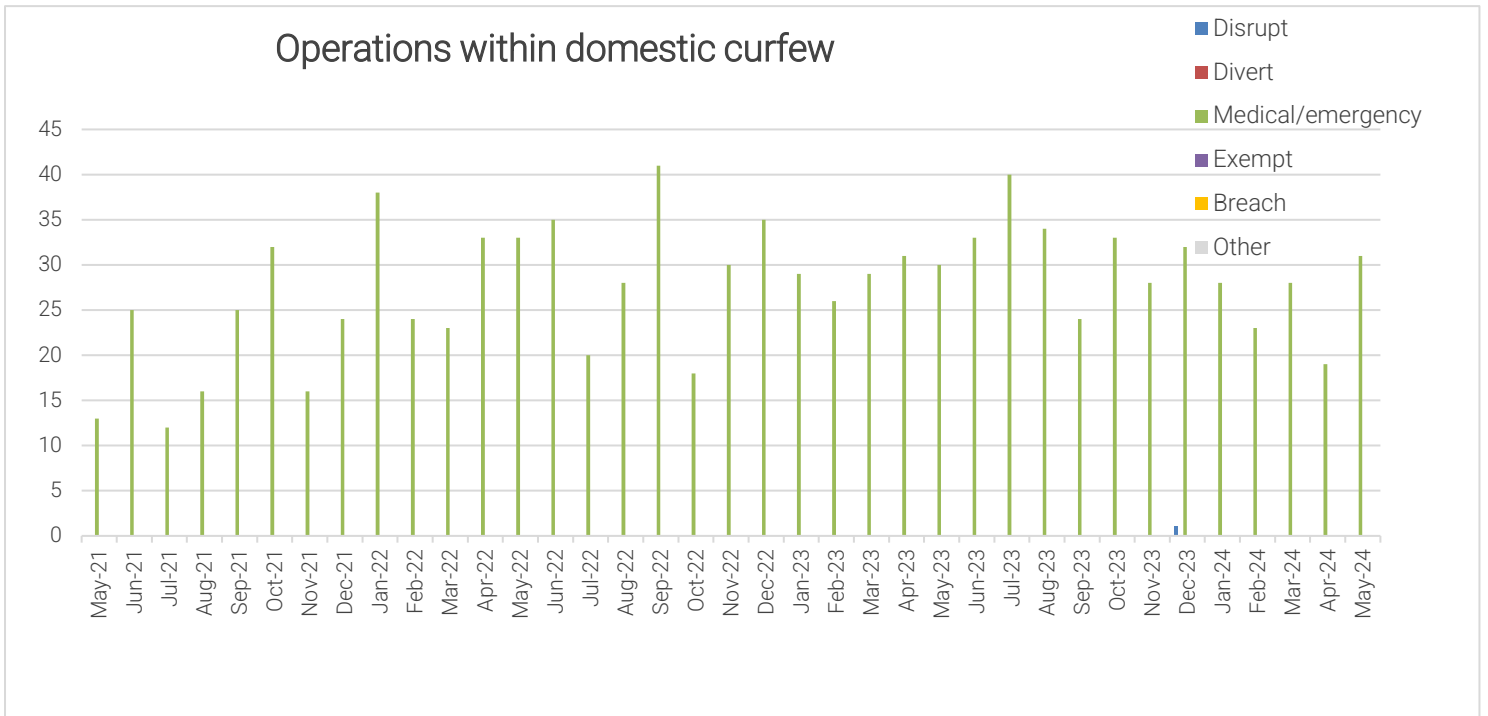
QRY - enquiries about rules etc

OTH - other feedback

# Noise Enquiries to May 2024

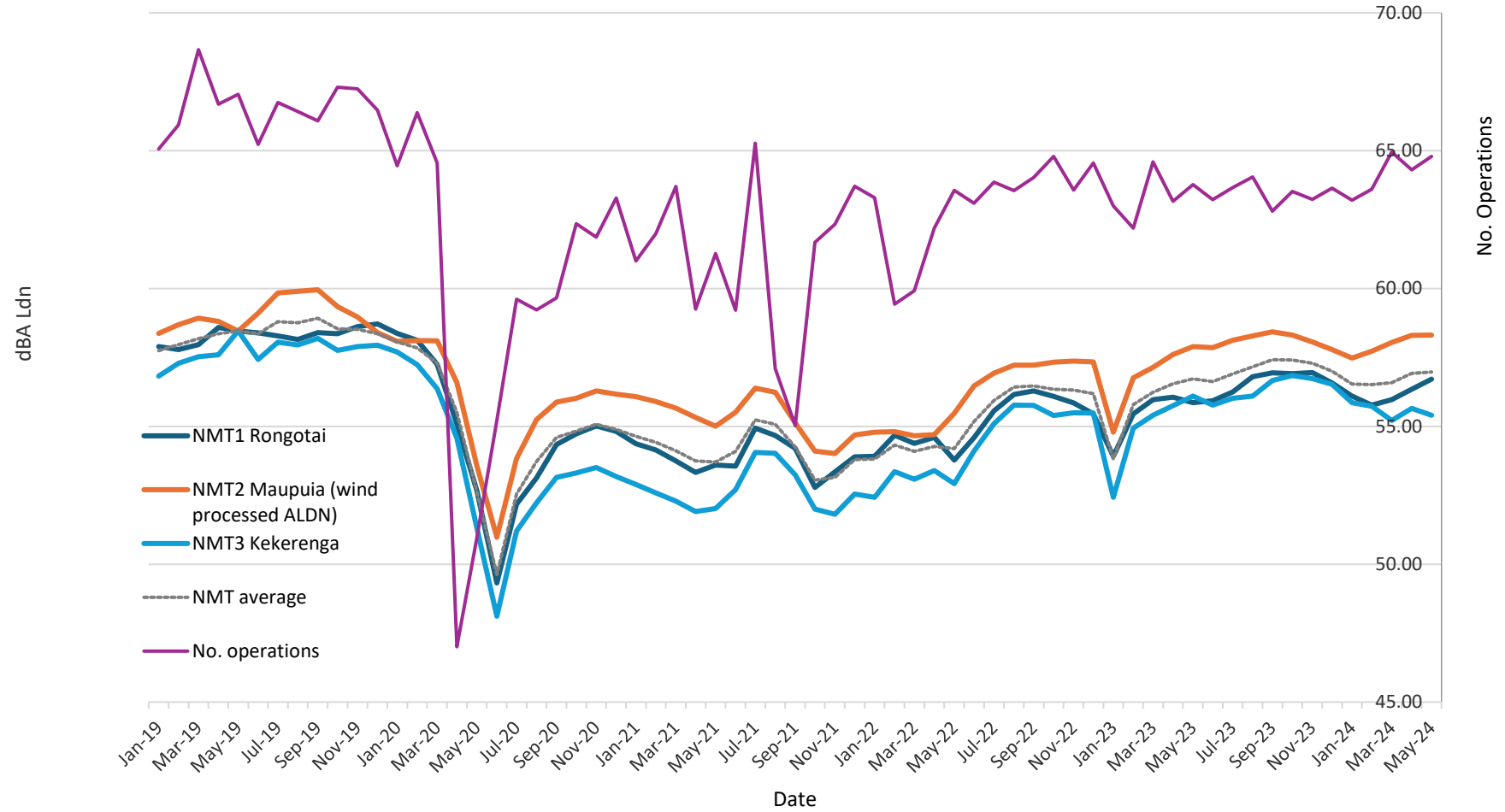


# CURFEW GRAPHS



# LDN COMPLIANCE GRAPH (as at May 2024)

Rolling 90 day average (Ldn 90 day)





Wellington International Airport  
Managed Noise Service  
Monthly Report for Mar 2024

---

**WELLINGTON INTERNATIONAL**  
**AIRPORT LIMITED**

Managed Noise Service

Monthly Report: Mar 2024

Provided By: Envirosuite

Date: 01 April, 2024



Wellington International Airport  
Managed Noise Service  
Monthly Report for Mar 2024

---

**Table of Contents**

<b>SUMMARY</b> .....	<b>3</b>
<b>AIRCRAFT LDN</b> .....	<b>4</b>
<b>AIRCRAFT OPERATIONS</b> .....	<b>5</b>
<b>UNCORRELATED AIRCRAFT</b> .....	<b>7</b>
<b>CALIBRATION REPORT</b> .....	<b>9</b>

Wellington International Airport  
Managed Noise Service  
Monthly Report for Mar 2024

---

## Summary

This report contains the information required by WIAL as part of the Envirosuite Managed Noise Service Agreement. The month of March saw all data collected from all three RMTs



Wellington International Airport  
Managed Noise Service  
Monthly Report for Mar 2024

## Aircraft LDN

**Daily LDN Table**  
**Mar 1, 2024 to Mar 31, 2024**

	<b>RMT 1 Rongotai</b>	<b>RMT 2 Maupuia</b>	<b>RMT 3 Kekerenga</b>
01-Mar-24	55.8	60.1	55.9
02-Mar-24	54.9	58.9	54.7
03-Mar-24	56.0	57.7	56.1
04-Mar-24	58.5	52.9	58.4
05-Mar-24	52.9	60.2	54.1
06-Mar-24	57.5	56.1	54.8
07-Mar-24	56.8	57.8	55.9
08-Mar-24	57.5	57.0	54.6
09-Mar-24	57.4	58.5	53.6
10-Mar-24	56.5	60.3	54.2
11-Mar-24	57.9	58.7	54.6
12-Mar-24	53.3	56.5	53.9
13-Mar-24	57.1	58.4	53.7
14-Mar-24	55.6	58.3	55.6
15-Mar-24	56.8	60.1	54.8
16-Mar-24	55.5	54.6	53.0
17-Mar-24	55.3	57.5	53.8
18-Mar-24	55.5	57.3	53.2
19-Mar-24	56.7	55.1	53.2
20-Mar-24	54.4	54.5	52.9
21-Mar-24	55.8	59.8	55.3
22-Mar-24	56.8	60.1	55.8
23-Mar-24	53.7	58.8	52.9
24-Mar-24	52.0	57.0	53.6
25-Mar-24	55.4	61.4	56.4
26-Mar-24	53.5	61.2	55.4
27-Mar-24	58.0	56.6	57.5
28-Mar-24	56.8	62.0	56.0
29-Mar-24	58.9	56.4	53.7
30-Mar-24	56.6	54.2	53.1
31-Mar-24	57.2	53.9	52.4

Wellington International Airport  
Managed Noise Service  
Monthly Report for Mar 2024

## Aircraft Operations

**Operations Analysis**  
**Mar 1, 2024 to Mar 31, 2024**

Operation Type	Day	Night	Total
Arrival	3519	119	3638
Departure	3353	193	3546
<b>Total</b>	<b>6872</b>	<b>312</b>	<b>7184</b>

Jet	Day	Night	Total
A20N - Airbus A-320	88	31	119
A21N - Airbus A-321	72	12	84
A320 - Airbus - A320	1764	86	1850
B38M - Boeing 737 Max 8	18	0	18
B737 - Boeing - 737-700	2	0	2
B738 - Boeing - 737-800	125	62	187
B752 - Boeing - 757-200	2	0	2
B789 - Boeing 787 Dreamliner	2	0	2
C25A - Cessna Citation CJ2+	31	0	31
C510 - CESSNA CITIATION MUSTANG	17	1	18
C560 - Cessna - Citation 5	2	0	2
E190 - Embraer E190	63	0	63
F2TH - Dassault-Breguet - Falcon 2000	2	0	2
FA50 - Dassault-Breguet - Falcon 50, Mystere 50 (T-16)	11	0	11
GLEX - Bombardier GLOBAL EXPRESS/Sentinel	2	0	2
LJ60 - Gates Learjet - Learjet 60	2	0	2
PC24 - Pilatus PC-24	2	0	2
<b>Total</b>	<b>2205</b>	<b>192</b>	<b>2397</b>

Wellington International Airport  
Managed Noise Service  
Monthly Report for Mar 2024

<b>Turboprop</b>	<b>Day</b>	<b>Night</b>	<b>Total</b>
A400 - Airbus - A400	2	0	2
AT75 - Aerospatale/Aeritalia - ATR-72-500	32	0	32
AT76 - Aerospatale/Aeritalia - ATR-72-600	1036	22	1058
B350 - Beech - Super King Air 350	8	0	8
BE20 - Beech - Super King Air 200, 1300	297	26	323
BE9L - Beech - KingAir90, A90 to E90 (T-44, V-C6), Taurus 90	32	0	32
C130 - Lockheed - Hercules, Spectre	4	0	4
C208 - Cessna-Caravan 1-208,(Super) Cargomaster, Grand Caravan (U27)	593	46	639
DH8C - Dehavilland - Dash 8, DHC8 - 300	1900	0	1900
JS31 - British Aerospace-BAe-3100 Jetstream 31	22	0	22
JS32 - British Aerospace-BAe-3200 Jetstream Super 31	74	0	74
PAY4 - Piper - Cheyenne 400	2	0	2
PC12 - Pilatus Flugzeugwerke Ag - PC-12	242	14	256
SF34 - Saab - SF-340	11	1	12
<b>Total</b>	<b>4255</b>	<b>109</b>	<b>4364</b>

<b>Others</b>	<b>Day</b>	<b>Night</b>	<b>Total</b>
A109 - AgustaWestland AW109	1	0	1
B06 - BELL B-206 JetRanger	2	0	2
BK17 - MBB/Kawasaki BK 117	37	6	43
BN2P - Britten Norman - BN-2A/B Islander, Defender	10	0	10
C17 - Mcdonnell-Douglas - Globemaster 3	2	0	2
C172 - Cessna - Skyhawk 172/Cutlass/Mescalero	45	0	45
C206 - Cessna - Stationair 6, Turbo Stationair 6	2	0	2
C402 - Cessna - Cessna 401, 402, Utiliner, Businessliner	2	0	2
C404 - Cessna - Titan 404	2	0	2
DA40 - Diamond DA40	5	0	5
EC45 - Eurocopter EC145	2	0	2
GA8 - GippsAero GA8 Airvan	79	0	79
H500 - MD Helicopters MD 500	2	0	2
H60 - Sikorsky S-70	2	0	2
P28A - Piper - Cherokee, Archer, Warrior, Cadet, Cruiser (PA-28-140/150/151/160/161/180/181)	36	0	36
P68 - Partenavia Construzioni Aeronautiche SpA - P68/B/C/-TC,Victor, Observer/P68R	4	2	6
PA34 - Piper - Seneca 2/3	13	0	13
PA38 - Piper - Tomahawk	67	0	67
PA44 - Piper - Seminole, Turbo Seminole	5	0	5
Unknown	94	3	97
<b>Total</b>	<b>412</b>	<b>11</b>	<b>423</b>

<b>Category</b>	<b>Day</b>	<b>Night</b>	<b>Total</b>
Jet	2205	192	2397
Turboprop	4255	109	4364
Other	412	11	423
<b>Total</b>	<b>6872</b>	<b>312</b>	<b>7184</b>

Wellington International Airport  
Managed Noise Service  
Monthly Report for Mar 2024

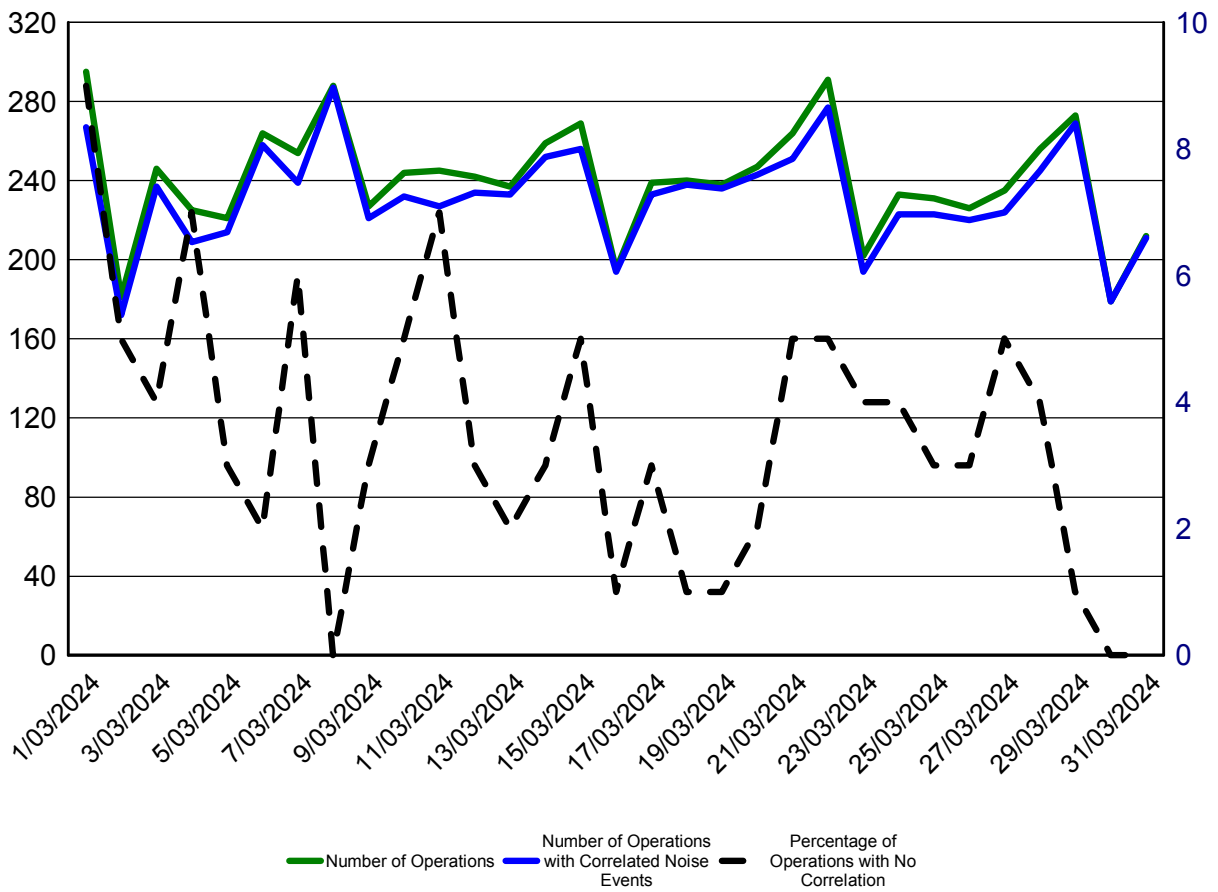
## Uncorrelated Aircraft

**Uncorrelated Aircraft Analysis**  
**Mar 1, 2024 to Mar 31, 2024**

Date	Number of Operations	Operations with Correlated Noise Events	Percentage of Operations With No Correlated Noise Events	Jets with No Correlated Noise Events
01-Mar-2024	295	267	9%	3
02-Mar-2024	181	172	5%	0
03-Mar-2024	246	237	4%	1
04-Mar-2024	225	209	7%	2
05-Mar-2024	221	214	3%	2
06-Mar-2024	264	258	2%	2
07-Mar-2024	254	239	6%	2
08-Mar-2024	288	287	0%	0
09-Mar-2024	227	221	3%	0
10-Mar-2024	244	232	5%	0
11-Mar-2024	245	227	7%	2
12-Mar-2024	242	234	3%	0
13-Mar-2024	237	233	2%	1
14-Mar-2024	259	252	3%	0
15-Mar-2024	269	256	5%	4
16-Mar-2024	195	194	1%	0
17-Mar-2024	239	233	3%	1
18-Mar-2024	240	238	1%	1
19-Mar-2024	238	236	1%	0
20-Mar-2024	247	243	2%	2
21-Mar-2024	264	251	5%	2
22-Mar-2024	291	277	5%	1
23-Mar-2024	202	194	4%	0
24-Mar-2024	233	223	4%	1
25-Mar-2024	231	223	3%	2
26-Mar-2024	226	220	3%	0
27-Mar-2024	235	224	5%	2
28-Mar-2024	256	245	4%	2
29-Mar-2024	273	269	1%	0
30-Mar-2024	179	179	0%	0
31-Mar-2024	212	211	0%	0

Wellington International Airport  
 Managed Noise Service  
 Monthly Report for Mar 2024

This graph shown below provides a summary of the noise correlation at Wellington Airport during March 2024



Wellington International Airport  
Managed Noise Service  
Monthly Report for Mar 2024

**Calibration Report**

	RMT 1			RMT 2			RMT 3		
	Measured	Diff.	Status	Measured	Diff.	Status	Measured	Diff.	Status
01-Mar-2024	88.4	0.3	SUCCESS	87.9	0.0	SUCCESS	88.4	-0.2	SUCCESS
02-Mar-2024	88.4	0.3	SUCCESS	88.0	0.1	SUCCESS	88.4	-0.2	SUCCESS
03-Mar-2024	88.4	0.3	SUCCESS	88.1	0.2	SUCCESS	88.4	-0.2	SUCCESS
04-Mar-2024	88.4	0.3	SUCCESS	88.1	0.2	SUCCESS	88.4	-0.2	SUCCESS
05-Mar-2024	88.4	0.3	SUCCESS	87.9	0.0	SUCCESS	88.3	-0.3	SUCCESS
06-Mar-2024	88.3	0.2	SUCCESS	87.9	0.0	SUCCESS	88.3	-0.3	SUCCESS
07-Mar-2024	88.4	0.3	SUCCESS	88.0	0.1	SUCCESS	88.4	-0.2	SUCCESS
08-Mar-2024	88.3	0.2	SUCCESS	87.9	0.0	SUCCESS	88.4	-0.2	SUCCESS
09-Mar-2024	88.3	0.2	SUCCESS	87.9	0.0	SUCCESS	88.4	-0.2	SUCCESS
10-Mar-2024	88.4	0.3	SUCCESS	88.0	0.1	SUCCESS	88.4	-0.2	SUCCESS
11-Mar-2024	88.4	0.3	SUCCESS	88.0	0.1	SUCCESS	88.5	-0.1	SUCCESS
12-Mar-2024	88.4	0.3	SUCCESS	88.0	0.1	SUCCESS	88.5	-0.1	SUCCESS
13-Mar-2024	88.4	0.3	SUCCESS	88.0	0.1	SUCCESS	88.5	-0.1	SUCCESS
14-Mar-2024	88.4	0.3	SUCCESS	88.0	0.1	SUCCESS	88.5	-0.1	SUCCESS
15-Mar-2024	88.4	0.3	SUCCESS	88.0	0.1	SUCCESS	88.5	-0.1	SUCCESS
16-Mar-2024	88.3	0.2	SUCCESS	87.9	0.0	SUCCESS	88.5	-0.1	SUCCESS
17-Mar-2024	88.4	0.3	SUCCESS	87.9	0.0	SUCCESS	88.4	-0.2	SUCCESS
18-Mar-2024	88.3	0.2	SUCCESS	87.9	0.0	SUCCESS	88.4	-0.2	SUCCESS
19-Mar-2024	88.3	0.2	SUCCESS	87.9	0.0	SUCCESS	88.4	-0.2	SUCCESS
20-Mar-2024	88.3	0.2	SUCCESS	87.9	0.0	SUCCESS	88.4	-0.2	SUCCESS
21-Mar-2024	88.4	0.3	SUCCESS	87.9	0.0	SUCCESS	88.4	-0.2	SUCCESS
22-Mar-2024	88.3	0.2	SUCCESS	87.9	0.0	SUCCESS	88.4	-0.2	SUCCESS
23-Mar-2024	88.3	0.2	SUCCESS	87.9	0.0	SUCCESS	88.4	-0.2	SUCCESS
24-Mar-2024	88.4	0.3	SUCCESS	87.9	0.0	SUCCESS	88.4	-0.2	SUCCESS
25-Mar-2024	88.4	0.3	SUCCESS	88.0	0.1	SUCCESS	88.4	-0.2	SUCCESS
26-Mar-2024	88.3	0.2	SUCCESS	88.0	0.1	SUCCESS	88.4	-0.2	SUCCESS
27-Mar-2024	88.4	0.3	SUCCESS	88.0	0.1	SUCCESS	88.4	-0.2	SUCCESS
28-Mar-2024	88.4	0.3	SUCCESS	88.0	0.1	SUCCESS	88.4	-0.2	SUCCESS
29-Mar-2024	88.3	0.2	SUCCESS	87.9	0.0	SUCCESS	88.4	-0.2	SUCCESS
30-Mar-2024	88.3	0.2	SUCCESS	87.9	0.0	SUCCESS	88.4	-0.2	SUCCESS
31-Mar-2024	88.3	0.2	SUCCESS	87.9	0.0	SUCCESS	88.3	-0.3	SUCCESS



**WELLINGTON INTERNATIONAL**  
**AIRPORT LIMITED**

Managed Noise Service

Monthly Report: Apr 2024

Provided By: Envirosuite  
Date: 01 May, 2024



Wellington International Airport  
Managed Noise Service  
Monthly Report for Apr 2024

---

**Table of Contents**

<b>SUMMARY</b> .....	<b>3</b>
<b>AIRCRAFT LDN</b> .....	<b>4</b>
<b>AIRCRAFT OPERATIONS</b> .....	<b>5</b>
<b>UNCORRELATED AIRCRAFT</b> .....	<b>7</b>
<b>CALIBRATION REPORT</b> .....	<b>9</b>



Wellington International Airport  
Managed Noise Service  
Monthly Report for Apr 2024

---

## Summary

This report contains the information required by WIAL as part of the Envirosuite Managed Noise Service Agreement. The month of April saw data collected from all three RMTs with with exceptions as follows:

RMT 1 incomplete data between 07 April 2024 and 12 April 2024. HUB#14239761

\*07-Apr-2024 01:00 - 03:59

\*07-Apr-2024 12:00 - 08-Apr-2024 00:59

\*09-Apr-2024 12:00 - 12:59

\*11-Apr-2024 01:00 - 10:59

\*12-Apr-2024 11:00 - 11:59

RMT 2 incomplete data between 07 April 2024 and 12 April 2024. HUB#14239761

\*07-Apr-2024 01:00 - 08-Apr-2024 00:59

\*09-Apr-2024 12:00 - 12:59

\*11-Apr-2024 01:00 - 09:59

\*12-Apr-2024 11:00 - 11:59

RMT 3 incomplete data between 07 April 2024 and 12 April 2024. HUB#14239761

\*07-Apr-2024 01:00 - 03:59

\*07-Apr-2024 12:00 - 08-Apr-2024 00:59

\*09-Apr-2024 12:00 - 12:59

\*11-Apr-2024 01:00 - 09:59

\*12-Apr-2024 11:00 - 11:59

RMT 3 missed the hourly record on 16 Apr 2024 09:00. HUB# 14321110

Wellington International Airport  
Managed Noise Service  
Monthly Report for Apr 2024

## Aircraft LDN

**Daily LDN Table  
Apr 1, 2024 to Apr 30, 2024**

	<b>RMT 1 Rongotai</b>	<b>RMT 2 Maupuia</b>	<b>RMT 3 Kekerenga</b>
01-Apr-24	53.7	54.9	54.3
02-Apr-24	56.3	58.7	56.3
03-Apr-24	56.2	60.1	57.5
04-Apr-24	56.2	60.0	57.6
05-Apr-24	59.8	55.9	54.8
06-Apr-24	56.7	58.1	54.8
07-Apr-24	54.9	0.0	54.4
08-Apr-24	55.4	59.9	55.9
09-Apr-24	55.4	59.6	55.7
10-Apr-24	57.5	56.4	56.6
11-Apr-24	58.5	59.9	56.2
12-Apr-24	59.4	59.4	55.0
13-Apr-24	57.1	55.7	54.3
14-Apr-24	56.3	54.5	53.9
15-Apr-24	55.3	58.6	56.7
16-Apr-24	56.9	60.1	56.7
17-Apr-24	57.0	58.5	55.5
18-Apr-24	55.7	60.4	57.1
19-Apr-24	56.1	59.8	57.2
20-Apr-24	51.7	55.0	54.5
21-Apr-24	56.7	53.7	53.8
22-Apr-24	57.4	58.7	56.4
23-Apr-24	55.1	57.4	55.4
24-Apr-24	55.4	59.6	58.2
25-Apr-24	59.4	56.3	60.5
26-Apr-24	56.9	55.6	58.4
27-Apr-24	54.4	58.2	54.0
28-Apr-24	52.9	57.5	52.8
29-Apr-24	55.5	59.1	55.5
30-Apr-24	55.7	60.1	55.3

Wellington International Airport  
Managed Noise Service  
Monthly Report for Apr 2024

## Aircraft Operations

**Operations Analysis**  
**Apr 1, 2024 to Apr 30, 2024**

Operation Type	Day	Night	Total
Arrival	3382	133	3515
Departure	3255	179	3434
<b>Total</b>	<b>6637</b>	<b>312</b>	<b>6949</b>

Jet	Day	Night	Total
A20N - Airbus A-320	58	58	116
A21N - Airbus A-321	65	2	67
A320 - Airbus - A320	1670	90	1760
B38M - Boeing 737 Max 8	22	0	22
B737 - Boeing - 737-700	4	0	4
B738 - Boeing - 737-800	123	58	181
B752 - Boeing - 757-200	4	0	4
BE40 - Beech - Beechjet 400/T-1 Jayhawk	2	0	2
C25A - Cessna Citation CJ2+	30	0	30
C25B - Cessna Citation CJ3 (twin-jet)	4	0	4
C25C - Cessna Citation CJ4 (twin-jet)	2	0	2
C510 - CESSNA CITIATION MUSTANG	28	0	28
C680 - CESSNA - 680 Citation Sovereign L2J/M	4	1	5
E190 - Embraer E190	60	0	60
E55P - Embraer EMB-505 Phenom 300	2	0	2
FA20 - Dassault-Breguet - Falcon 20, Mystere 20 (T-11)	2	0	2
FA50 - Dassault-Breguet - Falcon 50, Mystere 50 (T-16)	10	0	10
<b>Total</b>	<b>2090</b>	<b>209</b>	<b>2299</b>

Wellington International Airport  
Managed Noise Service  
Monthly Report for Apr 2024

<b>Turboprop</b>	<b>Day</b>	<b>Night</b>	<b>Total</b>
AT75 - Aerospatiale/Aeritalia - ATR-72-500	28	0	28
AT76 - Aerospatiale/Aeritalia - ATR-72-600	1056	14	1070
B350 - Beech - Super King Air 350	14	1	15
BE20 - Beech - Super King Air 200, 1300	254	20	274
BE9L - Beech - KingAir90, A90 to E90 (T-44, V-C6), Taurus 90	41	0	41
C130 - Lockheed - Hercules, Spectre	4	0	4
C208 - Cessna-Caravan 1-208,(Super) Cargomaster, Grand Caravan (U27)	543	46	589
C425 - Cessna - Corsair/Conquest I-425	2	0	2
DH8C - Dehavilland - Dash 8, DHC8 - 300	1844	0	1844
JS31 - British Aerospace-BAe-3100 Jetstream 31	35	0	35
JS32 - British Aerospace-BAe-3200 Jetstream Super 31	71	0	71
PC12 - Pilatus Flugzeugwerke Ag - PC-12	247	13	260
SF34 - Saab - SF-340	12	0	12
<b>Total</b>	<b>4151</b>	<b>94</b>	<b>4245</b>

<b>Others</b>	<b>Day</b>	<b>Night</b>	<b>Total</b>
A109 - AgustaWestland AW109	1	0	1
BK17 - MBB/Kawasaki BK 117	14	2	16
BL17 - Bellanca - Super Viking, TurboViking	2	0	2
BN2A - BRITTEN-NORMAN BN2A Mk III Trislander	1	0	1
BN2P - Britten Norman - BN-2A/B Islander, Defender	15	0	15
C17 - Mcdonnell-Douglas - Globemaster 3	2	0	2
C172 - Cessna - Skyhawk 172/Cutlass/Mescalero	35	0	35
C402 - Cessna - Cessna 401, 402, Utiliner, Businessliner	3	0	3
GA8 - GippsAero GA8 Airvan	87	0	87
H500 - MD Helicopters MD 500	4	0	4
JS3A - British Aerospace (BAe) - Jetstream 3	1	0	1
M9 - Beretta M9	5	0	5
P28A - Piper - Cherokee, Archer, Warrior, Cadet, Cruiser (PA-28-140/150/151/160/161/180/181)	29	0	29
P28B - Piper - Dakota, Turbo Dakota, Charger, Pathfinder (PA-28-201T/235/236)	2	0	2
P28U	2	0	2
PA38 - Piper - Tomahawk	65	0	65
PA44 - Piper - Seminole, Turbo Seminole	1	0	1
SD4	2	0	2
Unknown	125	7	132
<b>Total</b>	<b>396</b>	<b>9</b>	<b>405</b>

<b>Category</b>	<b>Day</b>	<b>Night</b>	<b>Total</b>
Jet	2090	209	2299
Turboprop	4151	94	4245
Other	396	9	405
<b>Total</b>	<b>6637</b>	<b>312</b>	<b>6949</b>

Wellington International Airport  
Managed Noise Service  
Monthly Report for Apr 2024

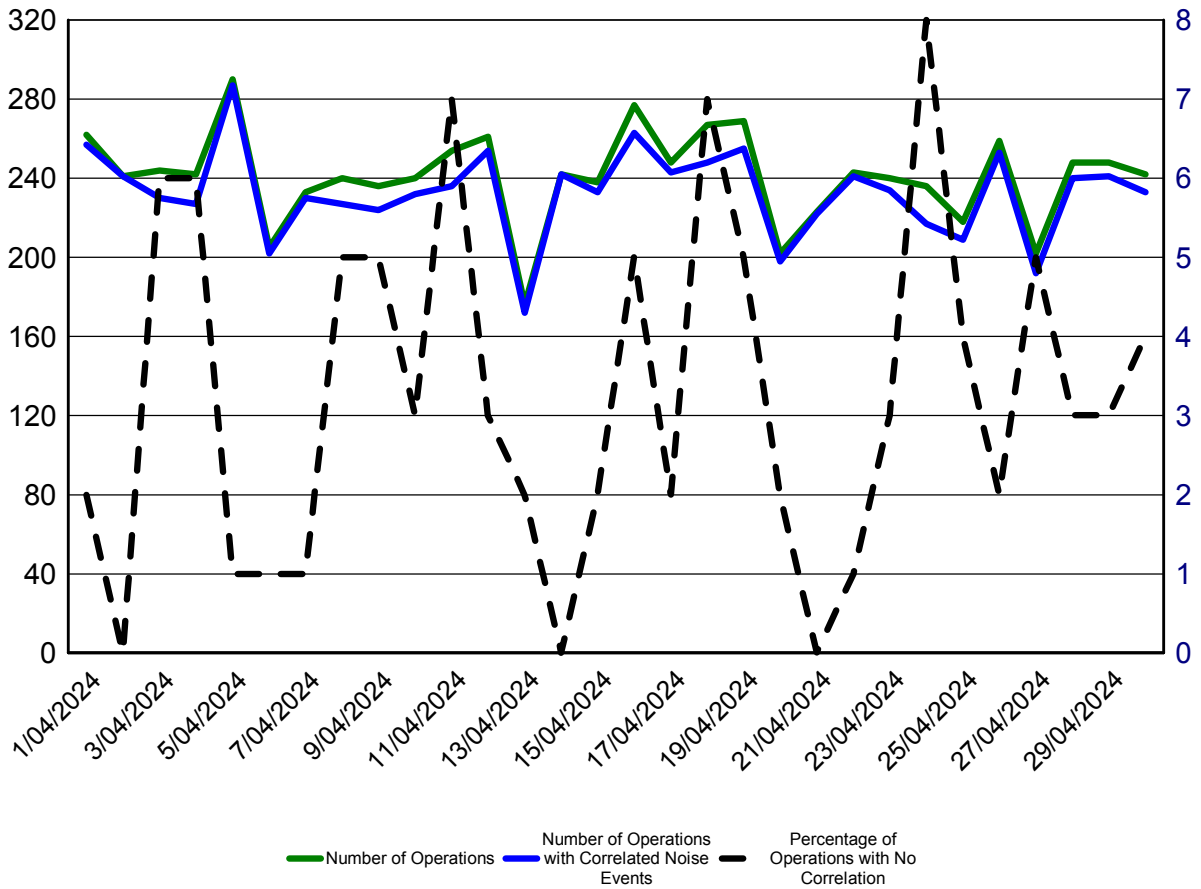
## Uncorrelated Aircraft

**Uncorrelated Aircraft Analysis**  
**Apr 1, 2024 to Apr 30, 2024**

Date	Number of Operations	Operations with Correlated Noise Events	Percentage of Operations With No Correlated Noise Events	Jets with No Correlated Noise Events
01-Apr-2024	262	257	2%	0
02-Apr-2024	241	241	0%	0
03-Apr-2024	244	230	6%	3
04-Apr-2024	242	227	6%	1
05-Apr-2024	290	287	1%	1
06-Apr-2024	205	202	1%	0
07-Apr-2024	233	230	1%	1
08-Apr-2024	240	227	5%	0
09-Apr-2024	236	224	5%	1
10-Apr-2024	240	232	3%	0
11-Apr-2024	254	236	7%	0
12-Apr-2024	261	254	3%	1
13-Apr-2024	176	172	2%	0
14-Apr-2024	242	242	0%	0
15-Apr-2024	238	233	2%	1
16-Apr-2024	277	263	5%	2
17-Apr-2024	248	243	2%	0
18-Apr-2024	267	248	7%	1
19-Apr-2024	269	255	5%	0
20-Apr-2024	202	198	2%	1
21-Apr-2024	223	222	0%	0
22-Apr-2024	243	241	1%	1
23-Apr-2024	240	234	3%	0
24-Apr-2024	236	217	8%	1
25-Apr-2024	218	209	4%	2
26-Apr-2024	259	253	2%	0
27-Apr-2024	202	192	5%	0
28-Apr-2024	248	240	3%	0
29-Apr-2024	248	241	3%	0
30-Apr-2024	242	233	4%	0

Wellington International Airport  
 Managed Noise Service  
 Monthly Report for Apr 2024

This graph shown below provides a summary of the noise correlation at Wellington Airport during April 2024



Wellington International Airport  
Managed Noise Service  
Monthly Report for Apr 2024

**Calibration Report**

	RMT 1			RMT 2			RMT 3		
	Measured	Diff.	Status	Measured	Diff.	Status	Measured	Diff.	Status
01-Apr-2024	88.3	0.2	SUCCESS	87.9	0.0	SUCCESS	88.3	-0.3	SUCCESS
02-Apr-2024	88.3	0.2	SUCCESS	87.9	0.0	SUCCESS	88.3	-0.3	SUCCESS
03-Apr-2024	88.4	0.3	SUCCESS	88.0	0.1	SUCCESS	88.3	-0.3	SUCCESS
04-Apr-2024	88.4	0.3	SUCCESS	88.0	0.1	SUCCESS	88.3	-0.3	SUCCESS
05-Apr-2024	88.3	0.2	SUCCESS	87.9	0.0	SUCCESS	88.3	-0.3	SUCCESS
06-Apr-2024	88.3	0.2	SUCCESS	87.9	0.0	SUCCESS	88.3	-0.3	SUCCESS
07-Apr-2024	88.3	0.2	SUCCESS	87.9	0.0	SUCCESS	88.4	-0.2	SUCCESS
08-Apr-2024	88.4	0.3	SUCCESS	87.9	0.0	SUCCESS	88.5	-0.1	SUCCESS
09-Apr-2024	88.4	0.3	SUCCESS	88.0	0.1	SUCCESS	88.6	0.0	SUCCESS
10-Apr-2024	88.4	0.3	SUCCESS	88.0	0.1	SUCCESS	88.7	0.1	SUCCESS
11-Apr-2024	88.4	0.3	SUCCESS	88.0	0.1	SUCCESS	88.7	0.1	SUCCESS
12-Apr-2024	88.4	0.3	SUCCESS	88.0	0.1	SUCCESS	88.7	0.1	SUCCESS
13-Apr-2024	88.3	0.2	SUCCESS	87.9	0.0	SUCCESS	88.5	-0.1	SUCCESS
14-Apr-2024	88.3	0.2	SUCCESS	87.9	0.0	SUCCESS	88.3	-0.3	SUCCESS
15-Apr-2024	88.3	0.2	SUCCESS	87.9	0.0	SUCCESS	88.3	-0.3	SUCCESS
16-Apr-2024	88.4	0.3	SUCCESS	87.9	0.0	SUCCESS	88.3	-0.3	SUCCESS
17-Apr-2024	88.3	0.2	SUCCESS	87.9	0.0	SUCCESS	88.3	-0.3	SUCCESS
18-Apr-2024	88.4	0.3	SUCCESS	87.9	0.0	SUCCESS	88.3	-0.3	SUCCESS
19-Apr-2024	88.4	0.3	SUCCESS	88.0	0.1	SUCCESS	88.3	-0.3	SUCCESS
20-Apr-2024	88.3	0.2	SUCCESS	87.9	0.0	SUCCESS	88.3	-0.3	SUCCESS
21-Apr-2024	88.3	0.2	SUCCESS	87.9	0.0	SUCCESS	88.3	-0.3	SUCCESS
22-Apr-2024	88.3	0.2	SUCCESS	87.9	0.0	SUCCESS	88.3	-0.3	SUCCESS
23-Apr-2024	88.4	0.3	SUCCESS	87.9	0.0	SUCCESS	88.3	-0.3	SUCCESS
24-Apr-2024	88.4	0.3	SUCCESS	87.9	0.0	SUCCESS	88.4	-0.2	SUCCESS
25-Apr-2024	88.4	0.3	SUCCESS	88.1	0.2	SUCCESS	88.4	-0.2	SUCCESS
26-Apr-2024	88.3	0.2	SUCCESS	88.1	0.2	SUCCESS	88.3	-0.3	SUCCESS
27-Apr-2024	88.3	0.2	SUCCESS	87.9	0.0	SUCCESS	88.3	-0.3	SUCCESS
28-Apr-2024	88.3	0.2	SUCCESS	87.9	0.0	SUCCESS	88.5	-0.1	SUCCESS
29-Apr-2024	88.3	0.2	SUCCESS	87.9	0.0	SUCCESS	88.6	0.0	SUCCESS
30-Apr-2024	88.3	0.2	SUCCESS	88.0	0.1	SUCCESS	88.7	0.1	SUCCESS



**WELLINGTON INTERNATIONAL**  
**AIRPORT LIMITED**

Managed Noise Service

Monthly Report: May 2024

Provided By: Envirosuite  
Date: 01 June, 2024





Wellington International Airport  
Managed Noise Service  
Monthly Report for May 2024

---

**Table of Contents**

<b>SUMMARY</b> .....	<b>3</b>
<b>AIRCRAFT LDN</b> .....	<b>4</b>
<b>AIRCRAFT OPERATIONS</b> .....	<b>5</b>
<b>UNCORRELATED AIRCRAFT</b> .....	<b>7</b>
<b>CALIBRATION REPORT</b> .....	<b>9</b>

## Summary

This report contains the information required by WIAL as part of the Envirosuite Managed Noise Service Agreement. The month of May saw all data collected from all three RMTs.

Wellington International Airport  
Managed Noise Service  
Monthly Report for May 2024

## Aircraft LDN

**Daily LDN Table  
May 1, 2024 to May 31, 2024**

	<b>RMT 1 Rongotai</b>	<b>RMT 2 Maupuia</b>	<b>RMT 3 Kekerenga</b>
01-May-24	57.3	58.9	55.1
02-May-24	58.0	56.5	55.1
03-May-24	59.6	55.7	54.6
04-May-24	55.5	58.2	54.0
05-May-24	54.4	59.1	54.9
06-May-24	56.4	59.4	54.6
07-May-24	57.6	54.6	52.4
08-May-24	57.0	59.2	54.5
09-May-24	58.7	58.6	55.6
10-May-24	58.0	59.2	54.6
11-May-24	55.6	54.4	52.0
12-May-24	53.2	58.1	53.3
13-May-24	56.1	54.8	53.3
14-May-24	55.1	58.9	53.0
15-May-24	56.9	58.8	55.9
16-May-24	57.2	60.0	56.6
17-May-24	57.1	60.2	56.5
18-May-24	55.9	58.3	56.3
19-May-24	57.3	56.8	52.9
20-May-24	56.7	58.5	54.2
21-May-24	61.1	58.9	54.4
22-May-24	59.9	60.0	56.9
23-May-24	57.5	56.7	54.5
24-May-24	57.6	59.4	55.5
25-May-24	55.4	59.4	55.6
26-May-24	57.2	54.6	52.7
27-May-24	56.6	58.5	56.0
28-May-24	55.2	58.5	56.3
29-May-24	57.3	59.9	57.6
30-May-24	55.3	57.6	55.8
31-May-24	56.0	59.4	56.4

Wellington International Airport  
Managed Noise Service  
Monthly Report for May 2024

## Aircraft Operations

**Operations Analysis**  
**May 1, 2024 to May 31, 2024**

Operation Type	Day	Night	Total
Arrival	3475	137	3612
Departure	3324	191	3515
<b>Total</b>	<b>6799</b>	<b>328</b>	<b>7127</b>

Jet	Day	Night	Total
A20N - Airbus A-320	57	50	107
A21N - Airbus A-321	62	0	62
A320 - Airbus - A320	1693	89	1782
B38M - Boeing 737 Max 8	18	0	18
B738 - Boeing - 737-800	125	61	186
B752 - Boeing - 757-200	4	0	4
BE40 - Beech - Beechjet 400/T-1 Jayhawk	4	0	4
C25A - Cessna Citation CJ2+	13	0	13
C25B - Cessna Citation CJ3 (twin-jet)	2	0	2
C510 - CESSNA CITIATION MUSTANG	35	0	35
C680 - CESSNA - 680 Citation Sovereign L2J/M	1	1	2
CL60 - Canadair Bombardier - CL600/610 Challenger	3	1	4
E190 - Embraer E190	48	0	48
E50P - Embraer Phenom 100	4	0	4
E55P - Embraer EMB-505 Phenom 300	2	0	2
FA50 - Dassault-Breguet - Falcon 50, Mystere 50 (T-16)	6	0	6
GLEK - Bombardier GLOBAL EXPRESS/Sentinel	7	0	7
GLF6 - Gulfstream G650	2	0	2
H25B - British Aerospace (BAe) - BAe HS 125 Series 700/800	2	0	2
PC24 - Pilatus PC-24	2	0	2
<b>Total</b>	<b>2090</b>	<b>202</b>	<b>2292</b>

Wellington International Airport  
Managed Noise Service  
Monthly Report for May 2024

<b>Turboprop</b>	<b>Day</b>	<b>Night</b>	<b>Total</b>
AT75 - Aerospatiale/Aeritalia - ATR-72-500	18	0	18
AT76 - Aerospatiale/Aeritalia - ATR-72-600	1077	21	1098
B350 - Beech - Super King Air 350	42	5	47
BE20 - Beech - Super King Air 200, 1300	309	27	336
BE9L - Beech - KingAir90, A90 to E90 (T-44, V-C6), Taurus 90	50	2	52
C130 - Lockheed - Hercules, Spectre	12	0	12
C208 - Cessna-Caravan 1-208,(Super) Cargomaster, Grand Caravan (U27)	579	41	620
DH8C - Dehavilland - Dash 8, DHC8 - 300	1835	1	1836
JS31 - British Aerospace-BAe-3100 Jetstream 31	33	0	33
JS32 - British Aerospace-BAe-3200 Jetstream Super 31	54	0	54
PAY4 - Piper - Cheyenne 400	2	0	2
PC12 - Pilatus Flugzeugwerke Ag - PC-12	248	17	265
SF34 - Saab - SF-340	11	0	11
TEX2 - Beechcraft T-6A Texan II	1	0	1
<b>Total</b>	<b>4271</b>	<b>114</b>	<b>4385</b>

<b>Others</b>	<b>Day</b>	<b>Night</b>	<b>Total</b>
BEAR - R & B RB-4 Bearhawk	2	0	2
BK17 - MBB/Kawasaki BK 117	23	2	25
BN2P - Britten Norman - BN-2A/B Islander, Defender	7	0	7
C172 - Cessna - Skyhawk 172/Cutlass/Mescalero	39	0	39
C185 - Cessna - Skywagon 185 (U-17A/B)	4	0	4
C206 - Cessna - Stationair 6, Turbo Stationair 6	1	0	1
C210 - Cessna - Centurion 210, Turbo Centurion	2	0	2
C402 - Cessna - Cessna 401, 402, Utiliner, Businessliner	2	0	2
GA8 - GippsAero GA8 Airvan	84	0	84
M9 - Beretta M9	4	0	4
NH90 - NH90 Caiman	2	0	2
P28A - Piper - Cherokee, Archer, Warrior, Cadet, Cruiser (PA-28-140/150/151/160/161/180/181)	36	0	36
P28R - Piper - Cherokee Arrow 2/3, Turbo Arrow 3	1	0	1
PA38 - Piper - Tomahawk	113	0	113
PA44 - Piper - Seminole, Turbo Seminole	1	0	1
Unknown	117	10	127
<b>Total</b>	<b>438</b>	<b>12</b>	<b>450</b>

<b>Category</b>	<b>Day</b>	<b>Night</b>	<b>Total</b>
Jet	2090	202	2292
Turboprop	4271	114	4385
Other	438	12	450
<b>Total</b>	<b>6799</b>	<b>328</b>	<b>7127</b>

Wellington International Airport  
Managed Noise Service  
Monthly Report for May 2024

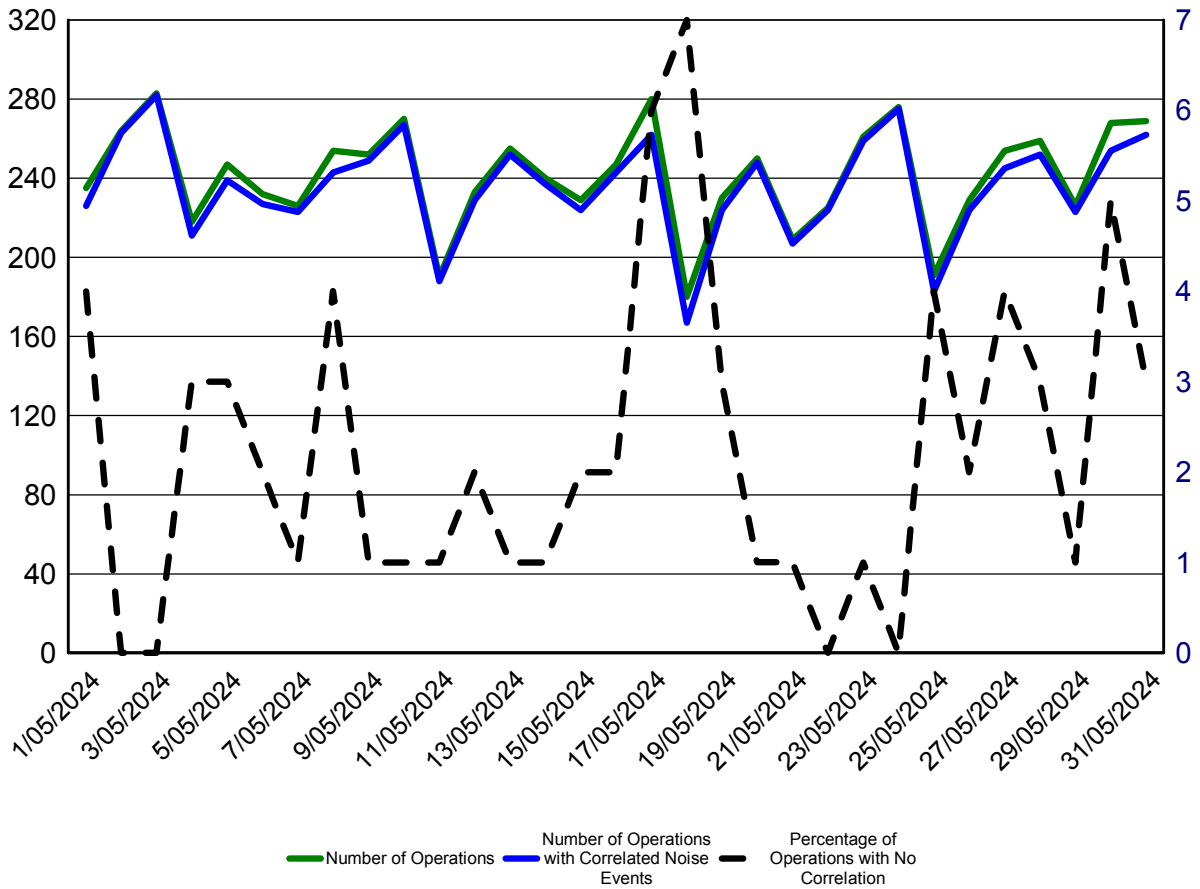
## Uncorrelated Aircraft

**Uncorrelated Aircraft Analysis**  
**May 1, 2024 to May 31, 2024**

Date	Number of Operations	Operations with Correlated Noise Events	Percentage of Operations With No Correlated Noise Events	Jets with No Correlated Noise Events
01-May-2024	235	226	4%	1
02-May-2024	264	263	0%	0
03-May-2024	283	282	0%	0
04-May-2024	218	211	3%	1
05-May-2024	247	239	3%	1
06-May-2024	232	227	2%	0
07-May-2024	226	223	1%	0
08-May-2024	254	243	4%	1
09-May-2024	252	249	1%	1
10-May-2024	270	267	1%	0
11-May-2024	190	188	1%	0
12-May-2024	233	229	2%	0
13-May-2024	255	252	1%	0
14-May-2024	240	237	1%	0
15-May-2024	229	224	2%	1
16-May-2024	247	243	2%	0
17-May-2024	280	262	6%	0
18-May-2024	180	167	7%	3
19-May-2024	230	224	3%	1
20-May-2024	250	248	1%	1
21-May-2024	209	207	1%	0
22-May-2024	225	224	0%	0
23-May-2024	261	259	1%	0
24-May-2024	276	275	0%	1
25-May-2024	191	183	4%	1
26-May-2024	229	224	2%	1
27-May-2024	254	245	4%	0
28-May-2024	259	252	3%	1
29-May-2024	226	223	1%	1
30-May-2024	268	254	5%	2
31-May-2024	269	262	3%	0

Wellington International Airport  
 Managed Noise Service  
 Monthly Report for May 2024

This graph shown below provides a summary of the noise correlation at Wellington Airport during May 2024



Wellington International Airport  
Managed Noise Service  
Monthly Report for May 2024

**Calibration Report**

	RMT 1			RMT 2			RMT 3		
	Measured	Diff.	Status	Measured	Diff.	Status	Measured	Diff.	Status
01-May-2024	88.3	0.2	SUCCESS	87.9	0.0	SUCCESS	88.7	0.1	SUCCESS
02-May-2024	88.3	0.2	SUCCESS	87.9	0.0	SUCCESS	88.6	0.0	SUCCESS
03-May-2024	88.3	0.2	SUCCESS	87.9	0.0	SUCCESS	88.7	0.1	SUCCESS
04-May-2024	88.4	0.3	SUCCESS	87.9	0.0	SUCCESS	88.6	0.0	SUCCESS
05-May-2024	88.3	0.2	SUCCESS	87.9	0.0	SUCCESS	88.6	0.0	SUCCESS
06-May-2024	88.3	0.2	SUCCESS	87.9	0.0	SUCCESS	88.6	0.0	SUCCESS
07-May-2024	88.3	0.2	SUCCESS	87.9	0.0	SUCCESS	88.6	0.0	SUCCESS
08-May-2024	88.3	0.2	SUCCESS	87.9	0.0	SUCCESS	88.6	0.0	SUCCESS
09-May-2024	88.4	0.3	SUCCESS	87.9	0.0	SUCCESS	88.6	0.0	SUCCESS
10-May-2024	88.3	0.2	SUCCESS	87.9	0.0	SUCCESS	88.6	0.0	SUCCESS
11-May-2024	88.3	0.2	SUCCESS	87.9	0.0	SUCCESS	88.6	0.0	SUCCESS
12-May-2024	88.3	0.2	SUCCESS	87.9	0.0	SUCCESS	88.6	0.0	SUCCESS
13-May-2024	88.3	0.2	SUCCESS	87.9	0.0	SUCCESS	88.6	0.0	SUCCESS
14-May-2024	88.3	0.2	SUCCESS	87.9	0.0	SUCCESS	88.6	0.0	SUCCESS
15-May-2024	88.3	0.2	SUCCESS	87.9	0.0	SUCCESS	88.6	0.0	SUCCESS
16-May-2024	88.4	0.3	SUCCESS	87.9	0.0	SUCCESS	88.5	-0.1	SUCCESS
17-May-2024	88.3	0.2	SUCCESS	87.9	0.0	SUCCESS	88.4	-0.2	SUCCESS
18-May-2024	88.4	0.3	SUCCESS	88.0	0.1	SUCCESS	88.5	-0.1	SUCCESS
19-May-2024	88.3	0.2	SUCCESS	87.9	0.0	SUCCESS	88.5	-0.1	SUCCESS
20-May-2024	88.3	0.2	SUCCESS	87.9	0.0	SUCCESS	88.5	-0.1	SUCCESS
21-May-2024	88.3	0.2	SUCCESS	87.9	0.0	SUCCESS	88.5	-0.1	SUCCESS
22-May-2024	88.3	0.2	SUCCESS	88.0	0.1	SUCCESS	88.4	-0.2	SUCCESS
23-May-2024	88.3	0.2	SUCCESS	87.9	0.0	SUCCESS	88.2	-0.4	SUCCESS
24-May-2024	88.3	0.2	SUCCESS	87.9	0.0	SUCCESS	88.2	-0.4	SUCCESS
25-May-2024	88.4	0.3	SUCCESS	87.9	0.0	SUCCESS	88.2	-0.4	SUCCESS
26-May-2024	88.3	0.2	SUCCESS	87.9	0.0	SUCCESS	88.2	-0.4	SUCCESS
27-May-2024	88.3	0.2	SUCCESS	87.9	0.0	SUCCESS	88.2	-0.4	SUCCESS
28-May-2024	88.3	0.2	SUCCESS	87.9	0.0	SUCCESS	88.3	-0.3	SUCCESS
29-May-2024	88.3	0.2	SUCCESS	87.9	0.0	SUCCESS	88.3	-0.3	SUCCESS
30-May-2024	88.3	0.2	SUCCESS	87.9	0.0	SUCCESS	88.3	-0.3	SUCCESS
31-May-2024	88.3	0.2	SUCCESS	87.9	0.0	SUCCESS	88.3	-0.3	SUCCESS