



# **Wellington Airport Noise Compliance Reporting**

## **June/July/August 2022**

- 1. Noise Enquiries Received and Response**
- 2. Noise Enquiries Graph**
- 3. Curfew Movements Graph**
- 4. Noise (LdN) Compliance Graph**
- 5. Monthly Monitoring Reports from Envirosuite Pty Limited**

## **As reported to the Air Noise Management Committee**

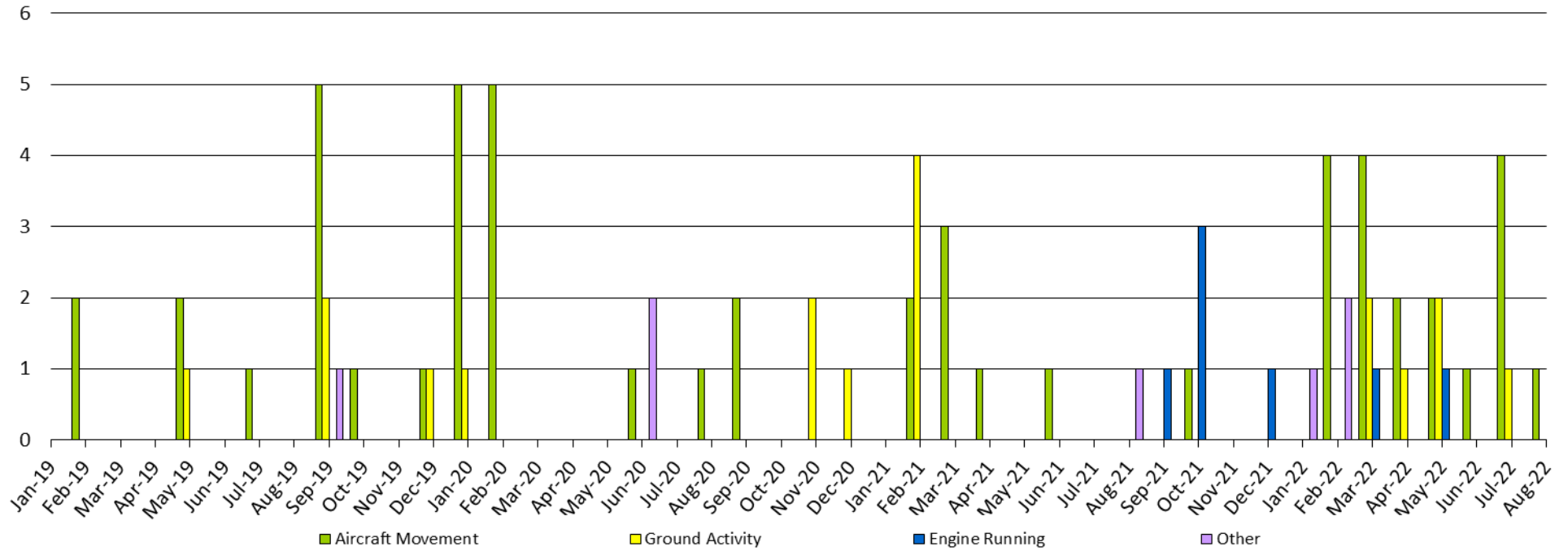
## **12 September 2022**

# Noise Enquiries Summary

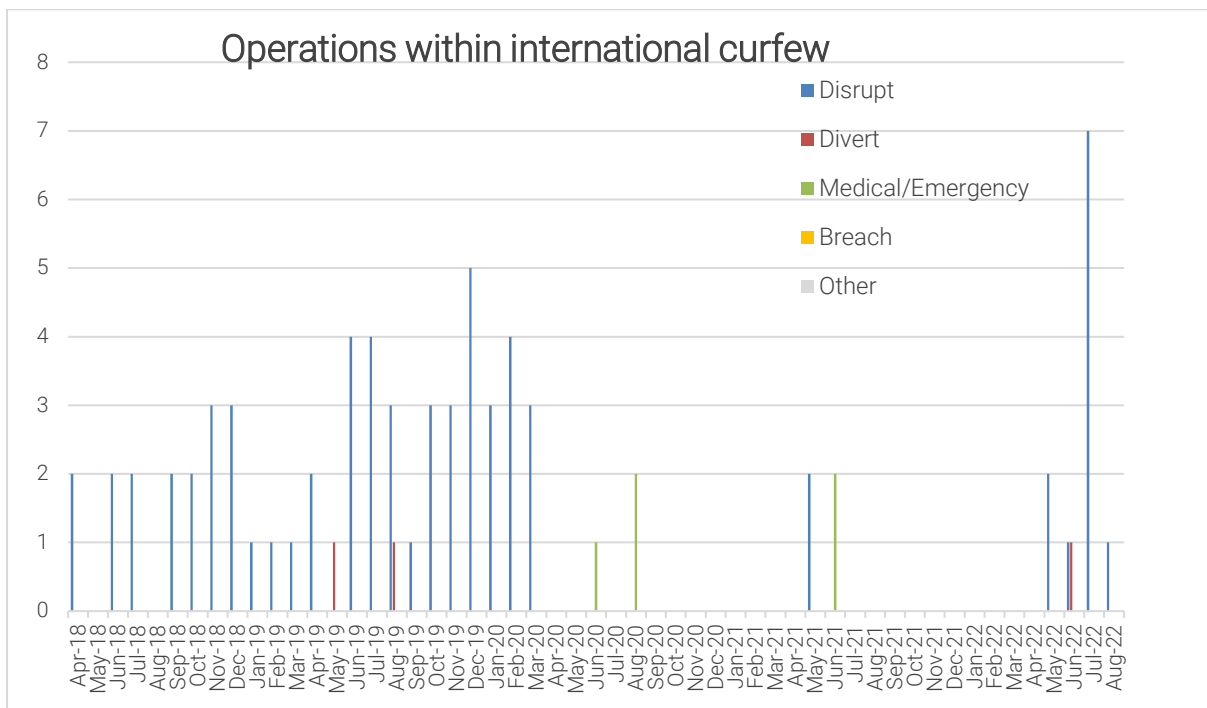
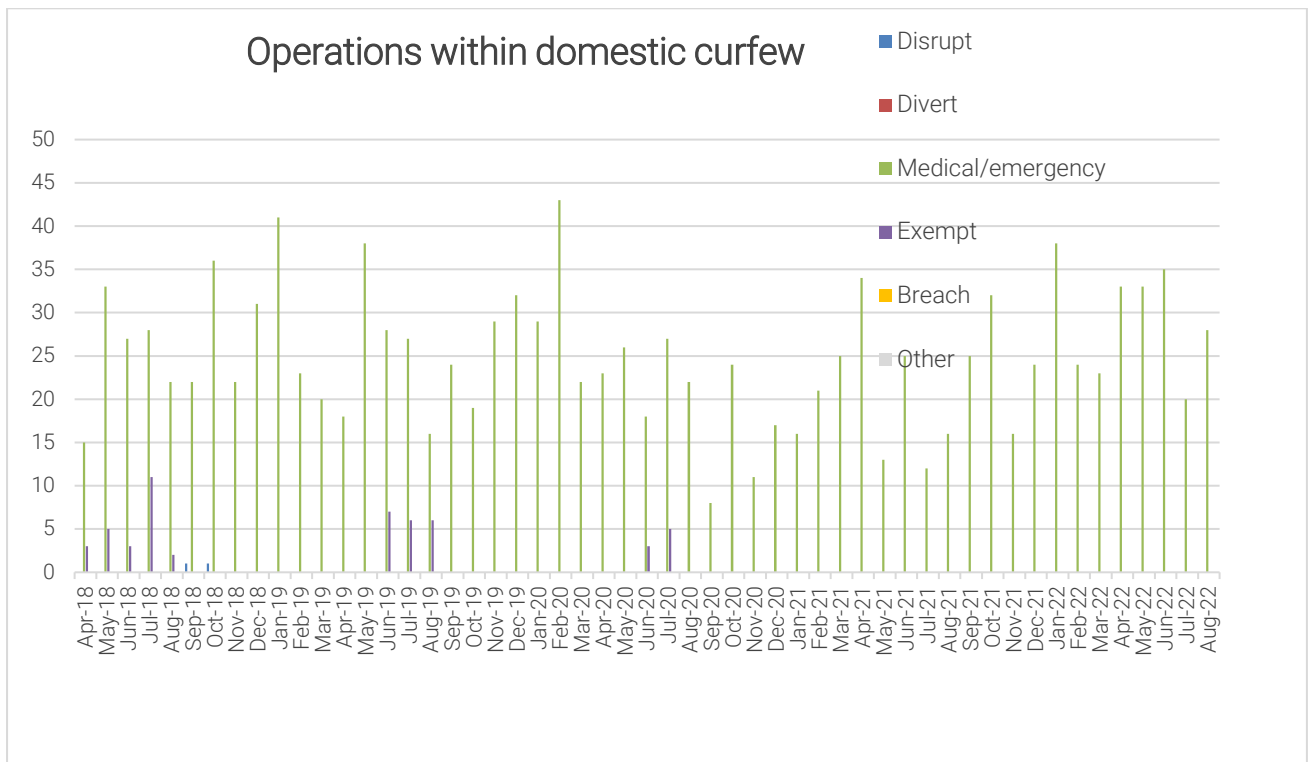
Date	Time	Suburb	Query	Source / Action	Category	Comment
13/06/2022		Strathmore Park	APU noise until 10:20pm (ran for at least an hour).	Emailed complainant to explain that complies with allowances for APU usage.	GPU	via email
3/07/2022	1:27pm	Strathmore Park	Strikemaster Excessive Noise. Not identifiable on Webtrak. Owner did not undertake mitigation that they said. Does not think that it should operate an expensive toy in a residential neighbourhood.	Jo L emailed owner of Strikemaster to ensure he informs community of future departures, tracks north of peninsula before turning and fits the transponder into the aircraft.	SIN	via email
6/07/2022	6:27am	Melrose	Noticed a high pitched whistle noise from an aircraft that has never noticed before (happening at the time of call)	This was a A320 Neo taxiing on Taxiway Alpha. Normal aircraft sound.	SIN	via call to Ops centre
13/07/2022	07:10		Two noisy military helicopters idling on apron.	Jo L spoke to NZDF. There was major police operation at the time. Security issue. Exempt requirements	QRY/SIN	via email
27/07/2022	12:05am	Miramar	Woken by loud metal clanging at 12:05 am. Also complained that late night arrivals are louder than they have ever been. Also noted that they leave their engines on for ages after landing.	Unsure what loud metal clanging was. There was no construction activity at this time. Explained that the airport is still less than 50% of pre-covid late international arrivals, although noted that the increase that we have had lately is significant compared to not having flights at this time of night. Also noted that would talk to airlines about running engines or APUs for long periods of night if not necessary. Explained that they have an allowance of 60 minutes after returning to gate. Complainant noted that she has only been living next to the airport since the end of 2020 so has never experienced international flights arriving this late at night.	GPU/MNT	via webform
16/08/2022	5:00am	Strathmore Park	Early morning noise continued for some time from 5am and then similar noise just before 6am	Medical flight arrived at 5:05am and then departed at 5:30am. Likely to have left engines running in between arrival and departure causing whining noise to be heard. Sounds Air departed at 6am so may have heard start up procedures and taxiing prior to 6am (this flight leaves at this time every day). Confirmed that there were no construction works being undertaken at this time. Emailed complainant with details.	SIN	via webform
28/08/2022	Various	Newlands	Query relating to flights over Newlands at 1:10am, 3:45am	Confirmed that the flights were emergency medical flights. One aircraft and one helicopter.	CUR	via email

GPU - GPU/APU use  
MNT - WIAL maintenance works  
ENG - engine testing  
SIN - single noisy aircraft movement  
CUR - airport movement during curfew hours  
OVR - overflight/holding/circling aircraft  
CAA - low flying/safety complaints  
QRY - enquiries about rules etc  
OTH - other feedback

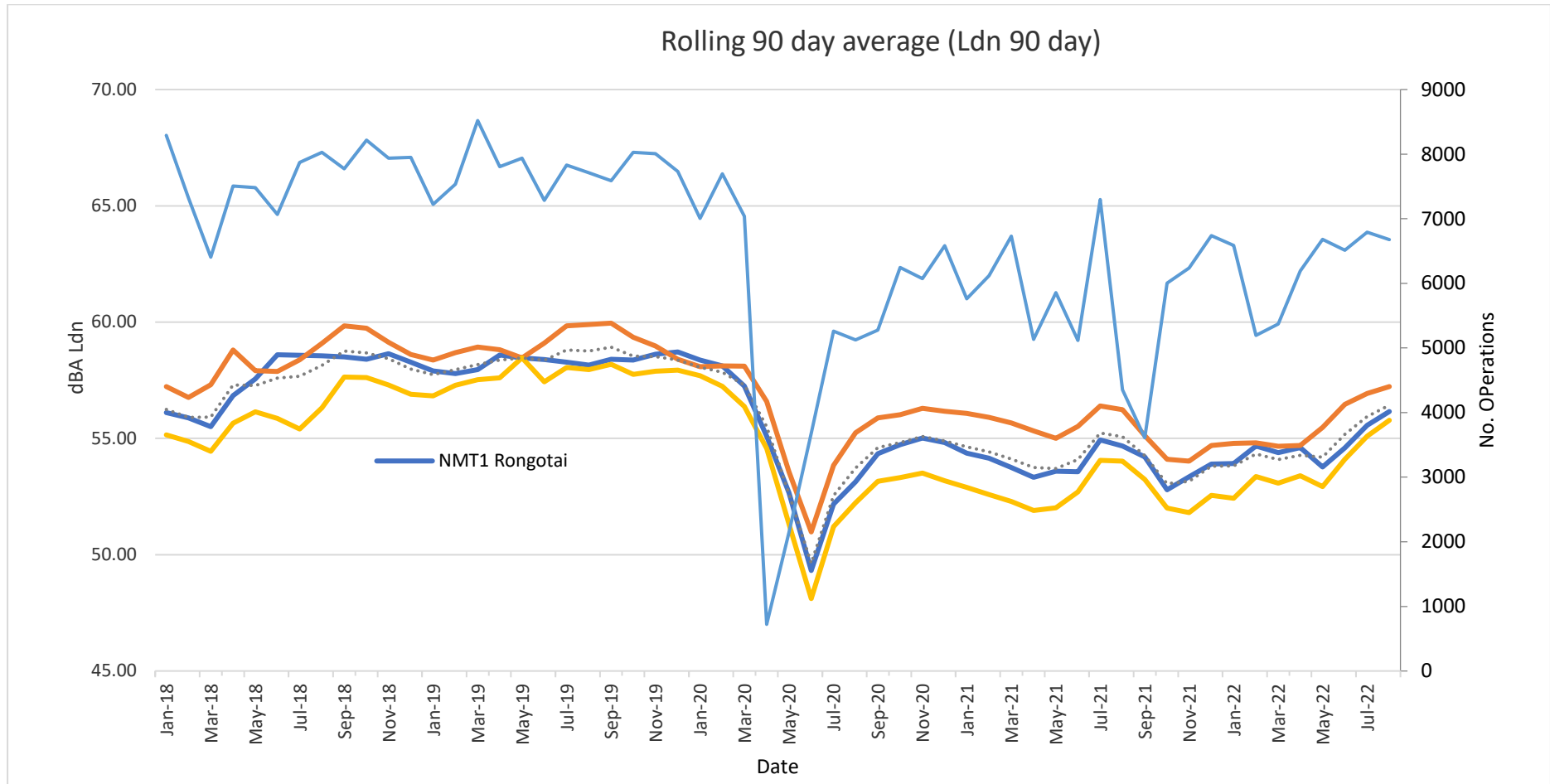
# Noise Enquiries to Aug 2022



# Curfew Graphs



# Ldn COMPLIANCE GRAPH





**WELLINGTON INTERNATIONAL**  
**AIRPORT LIMITED**

Managed Noise Service

Monthly Report: Jun 2022

Provided By: Envirosuite

Date: 14 July, 2022

Wellington International Airport  
Managed Noise Service  
Monthly Report for Jun 2022

---

## Table of Contents

<b>SUMMARY</b> .....	<b>3</b>
<b>AIRCRAFT LDN</b> .....	<b>4</b>
<b>AIRCRAFT OPERATIONS</b> .....	<b>5</b>
<b>UNCORRELATED AIRCRAFT</b> .....	<b>7</b>
<b>CALIBRATION REPORT</b> .....	<b>9</b>

Wellington International Airport  
Managed Noise Service  
Monthly Report for Jun 2022

---

## Summary

This report contains the information required by WIAL as part of the Envirosuite Managed Noise Service Agreement. The month of June saw data collected from all three RMTs with 5 exceptions as follows:

RMT 1 missed 1 hour on 10th June and 1 hour on 29th June  
RMT 2 missed 1 hour on 9th and 1 hour on 10th June  
RMT 3 missed 1 hour on 9th June



Wellington International Airport  
Managed Noise Service  
Monthly Report for Jun 2022

## Aircraft LDN

**Daily LDN Table**  
**Jun 1, 2022 to Jun 30, 2022**

	<b>RMT 1 Rongotai</b>	<b>RMT 2 Maupuia</b>	<b>RMT 3 Kekerenga</b>
01-Jun-22	57.4	55.6	57.3
02-Jun-22	55.3	59.1	56.2
03-Jun-22	58.0	55.5	54.2
04-Jun-22	54.8	54.7	52.5
05-Jun-22	50.9	56.1	53.1
06-Jun-22	53.8	56.5	54.9
07-Jun-22	54.7	58.6	56.5
08-Jun-22	55.9	52.9	54.6
09-Jun-22	55.3	60.2	56.3
10-Jun-22	58.8	54.2	58.0
11-Jun-22	53.5	59.9	56.9
12-Jun-22	56.6	58.3	57.3
13-Jun-22	55.3	59.2	57.1
14-Jun-22	53.7	58.4	55.2
15-Jun-22	52.6	59.0	54.9
16-Jun-22	52.0	57.5	54.5
17-Jun-22	55.0	55.8	54.0
18-Jun-22	55.2	55.4	53.3
19-Jun-22	57.4	55.2	54.2
20-Jun-22	59.3	57.0	55.4
21-Jun-22	57.4	55.7	53.2
22-Jun-22	57.4	55.4	53.7
23-Jun-22	54.0	57.3	55.0
24-Jun-22	54.4	58.1	56.1
25-Jun-22	52.1	56.7	54.2
26-Jun-22	53.9	57.7	55.4
27-Jun-22	54.9	58.8	56.4
28-Jun-22	57.0	56.1	54.4
29-Jun-22	54.3	57.8	55.2
30-Jun-22	54.9	58.6	55.8

Wellington International Airport  
Managed Noise Service  
Monthly Report for Jun 2022

## Aircraft Operations

**Operations Analysis**  
**Jun 1, 2022 to Jun 30, 2022**

Operation Type	Day	Night	Total
Arrival	3193	89	3282
Departure	3113	119	3232
<b>Total</b>	<b>6306</b>	<b>208</b>	<b>6514</b>

Jet	Day	Night	Total
A20N	216	15	231
A21N	18	0	18
A320 - Airbus - A320	1680	36	1716
B38M	18	0	18
B738 - Boeing - 737-800	109	19	128
B752 - Boeing - 757-200	4	0	4
C25A	6	0	6
C25B	4	0	4
C510 - CESSNA CITIATION MUSTANG	37	2	39
C560 - Cessna - Citation 5	12	0	12
C680 - CESSNA - 680 Citation Sovereign L2J/M	2	0	2
CL60 - Canadair Bombardier - CL600/610 Challenger	8	0	8
FA50 - Dassault-Breguet - Falcon 50, Mystere 50 (T-16)	27	2	29
FA7X	1	1	2
GLEX - Bombardier GLOBAL EXPRESS/Sentinel	1	0	1
<b>Total</b>	<b>2143</b>	<b>75</b>	<b>2218</b>

Turboprop	Day	Night	Total
AC90 - Rockwell - Turbo Commander 690, Commander Jetprop 840/900	1	0	1
AT75 - Aerospatiale/Aeritalia - ATR-72-500	16	0	16
AT76 - Aerospatiale/Aeritalia - ATR-72-600	874	23	897
B350 - Beech - Super King Air 350	14	1	15
BE20 - Beech - Super King Air 200, 1300	136	21	157
BE9L - Beech - KingAir90, A90 to E90 (T-44, V-C6), Taurus 90	38	0	38
C130 - Lockheed - Hercules, Spectre	4	0	4
C208 - Cessna - Caravan 1- 208,(Super) Cargomaster, Grand Caravan (U27)	442	32	474
C441 - Cessna - Conquest/Conquest 2 - 441	22	0	22
DH8C - Dehavilland - Dash 8, DHC8 - 300	1852	2	1854
JS31 - British Aerospace (BAe) - BAe-3100 Jetstream 31	4	0	4
JS32 - British Aerospace (BAe) - BAe-3200 Jetstream Super 31	114	22	136
MU2 - Mitsubishi - MU-2, Marquise, Solitaire	1	2	3
PC12 - Pilatus Flugzeugwerke Ag - PC-12	351	28	379

Wellington International Airport  
Managed Noise Service  
Monthly Report for Jun 2022

<b>Turboprop</b>	<b>Day</b>	<b>Night</b>	<b>Total</b>
SF34 - Saab - SF-340	2	0	2
TEX2	1	0	1
<b>Total</b>	<b>3872</b>	<b>131</b>	<b>4003</b>

<b>Others</b>	<b>Day</b>	<b>Night</b>	<b>Total</b>
BA67	1	0	1
BK17	11	1	12
C152 - Cessna - Cessna 152	2	0	2
C172 - Cessna - Skyhawk 172/Cutlass/Mescalero	25	0	25
C185 - Cessna - Skywagon 185 (U-17A/B)	6	0	6
C206 - Cessna - Stationair 6, Turbo Stationair 6	1	0	1
C402 - Cessna - Cessna 401, 402, Utiliner, Businessliner	1	0	1
DA42 - DA-42 Diamond Twin Star	2	0	2
GA8	34	0	34
M20P - Mooney Corp - M20/A/B/C/D/E/F/G/J/L/R	2	0	2
M9	4	0	4
P28A - Piper - Cherokee, Archer, Warrior, Cadet, Cruiser (PA-28-140/150/151/160/161/180/181)	31	1	32
P68 - Partenavia Construzioni Aeronautiche SpA - P68/B/C/-TC,Victor, Observer/P68R	4	0	4
PA34 - Piper - Seneca 2/3	25	0	25
PA38 - Piper - Tomahawk	34	0	34
PA46 - Piper - Malibu, Malibu Mirage	1	0	1
SR22 - Cirrus - SR-22	7	0	7
SW4B	9	0	9
	91	0	91
<b>Total</b>	<b>291</b>	<b>2</b>	<b>293</b>

<b>Category</b>	<b>Day</b>	<b>Night</b>	<b>Total</b>
Jet	2143	75	2218
Turboprop	3872	131	4003
Other	291	2	293
<b>Total</b>	<b>6306</b>	<b>208</b>	<b>6514</b>

Wellington International Airport  
Managed Noise Service  
Monthly Report for Jun 2022

---

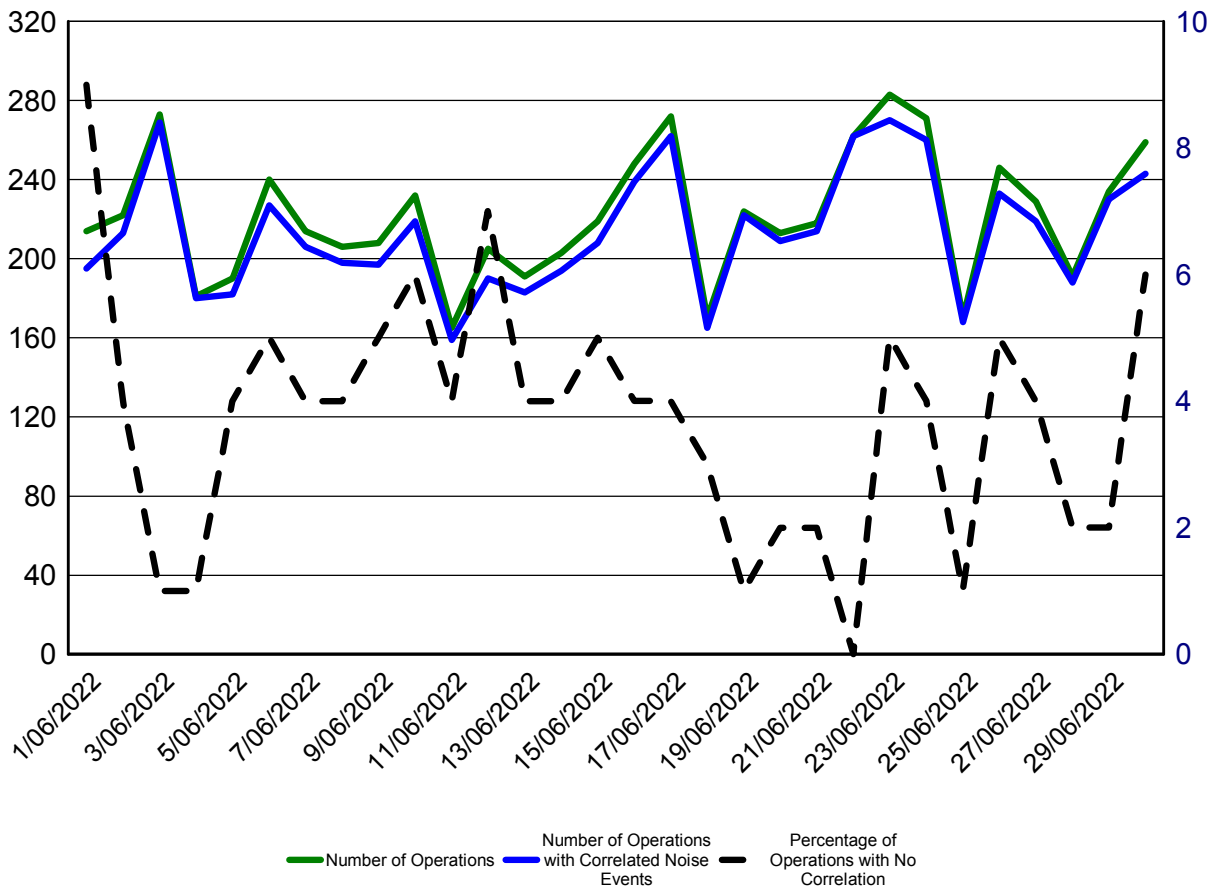
## Uncorrelated Aircraft

**Uncorrelated Aircraft Analysis**  
**Jun 1, 2022 to Jun 30, 2022**

Date	Number of Operations	Operations with Correlated Noise Events	Percentage of Operations With No Correlated Noise Events	Jets with No Correlated Noise Events
01-Jun-2022	214	195	9%	4
02-Jun-2022	222	213	4%	1
03-Jun-2022	273	269	1%	2
04-Jun-2022	181	180	1%	0
05-Jun-2022	190	182	4%	0
06-Jun-2022	240	227	5%	2
07-Jun-2022	214	206	4%	0
08-Jun-2022	206	198	4%	2
09-Jun-2022	208	197	5%	1
10-Jun-2022	232	219	6%	1
11-Jun-2022	165	159	4%	0
12-Jun-2022	205	190	7%	3
13-Jun-2022	191	183	4%	1
14-Jun-2022	203	194	4%	1
15-Jun-2022	219	208	5%	2
16-Jun-2022	248	239	4%	0
17-Jun-2022	272	262	4%	0
18-Jun-2022	170	165	3%	0
19-Jun-2022	224	222	1%	0
20-Jun-2022	213	209	2%	0
21-Jun-2022	218	214	2%	1
22-Jun-2022	262	262	0%	0
23-Jun-2022	283	270	5%	1
24-Jun-2022	271	260	4%	1
25-Jun-2022	170	168	1%	0
26-Jun-2022	246	233	5%	2
27-Jun-2022	229	219	4%	0
28-Jun-2022	191	188	2%	0
29-Jun-2022	234	230	2%	1
30-Jun-2022	259	243	6%	1

Wellington International Airport  
 Managed Noise Service  
 Monthly Report for Jun 2022

This graph shown below provides a summary of the noise correlation at Wellington Airport during June 2022



Wellington International Airport  
Managed Noise Service  
Monthly Report for Jun 2022

### Calibration Report

	RMT 1			RMT 2			RMT 3		
	Measured	Diff.	Status	Measured	Diff.	Status	Measured	Diff.	Status
01-Jun-2022	88.2	0.1	SUCCESS	87.8	0.3	SUCCESS	88.1	0.1	SUCCESS
02-Jun-2022	88.2	0.1	SUCCESS	87.8	0.3	SUCCESS	88.1	0.1	SUCCESS
03-Jun-2022	88.2	0.1	SUCCESS	87.7	0.2	SUCCESS	88.0	0.0	SUCCESS
04-Jun-2022	88.2	0.1	SUCCESS	87.7	0.2	SUCCESS	88.0	0.0	SUCCESS
05-Jun-2022	88.2	0.1	SUCCESS	87.7	0.2	SUCCESS	88.0	0.0	SUCCESS
06-Jun-2022	88.2	0.1	SUCCESS	87.7	0.2	SUCCESS	88.0	0.0	SUCCESS
07-Jun-2022	88.2	0.1	SUCCESS	87.8	0.3	SUCCESS	88.1	0.1	SUCCESS
08-Jun-2022	88.2	0.1	SUCCESS	87.8	0.3	SUCCESS	88.0	0.0	SUCCESS
09-Jun-2022	88.2	0.1	SUCCESS	87.9	0.4	SUCCESS	88.1	0.1	SUCCESS
10-Jun-2022	88.2	0.1	SUCCESS	87.9	0.4	SUCCESS	88.1	0.1	SUCCESS
11-Jun-2022	88.2	0.1	SUCCESS	87.8	0.3	SUCCESS	88.1	0.1	SUCCESS
12-Jun-2022	88.2	0.1	SUCCESS	87.8	0.3	SUCCESS	88.1	0.1	SUCCESS
13-Jun-2022	88.2	0.1	SUCCESS	87.8	0.3	SUCCESS	88.1	0.1	SUCCESS
14-Jun-2022	88.2	0.1	SUCCESS	87.8	0.3	SUCCESS	88.1	0.1	SUCCESS
15-Jun-2022	88.2	0.1	SUCCESS	87.8	0.3	SUCCESS	88.1	0.1	SUCCESS
16-Jun-2022	88.2	0.1	SUCCESS	87.8	0.3	SUCCESS	88.1	0.1	SUCCESS
17-Jun-2022	88.2	0.1	SUCCESS	87.8	0.3	SUCCESS	88.1	0.1	SUCCESS
18-Jun-2022	88.2	0.1	SUCCESS	87.7	0.2	SUCCESS	88.1	0.1	SUCCESS
19-Jun-2022	88.2	0.1	SUCCESS	87.7	0.2	SUCCESS	88.1	0.1	SUCCESS
20-Jun-2022	88.2	0.1	SUCCESS	87.8	0.3	SUCCESS	88.1	0.1	SUCCESS
21-Jun-2022	88.2	0.1	SUCCESS	87.7	0.2	SUCCESS	88.1	0.1	SUCCESS
22-Jun-2022	88.2	0.1	SUCCESS	87.7	0.2	SUCCESS	88.0	0.0	SUCCESS
23-Jun-2022	88.1	0.0	SUCCESS	87.7	0.2	SUCCESS	88.0	0.0	SUCCESS
24-Jun-2022	88.2	0.1	SUCCESS	87.7	0.2	SUCCESS	88.1	0.1	SUCCESS
25-Jun-2022	88.2	0.1	SUCCESS	87.8	0.3	SUCCESS	88.1	0.1	SUCCESS
26-Jun-2022	88.2	0.1	SUCCESS	87.8	0.3	SUCCESS	88.0	0.0	SUCCESS
27-Jun-2022	88.2	0.1	SUCCESS	87.8	0.3	SUCCESS	88.1	0.1	SUCCESS
28-Jun-2022	88.2	0.1	SUCCESS	87.8	0.3	SUCCESS	88.1	0.1	SUCCESS
29-Jun-2022	88.2	0.1	SUCCESS	87.8	0.3	SUCCESS	88.0	0.0	SUCCESS
30-Jun-2022	88.2	0.1	SUCCESS	87.8	0.3	SUCCESS	88.1	0.1	SUCCESS



Wellington International Airport  
Managed Noise Service  
Monthly Report for Jul 2022

---

**WELLINGTON INTERNATIONAL**  
**AIRPORT LIMITED**

Managed Noise Service

Monthly Report: Jul 2022

Provided By: Envirosuite

Date: 02 August, 2022

Wellington International Airport  
Managed Noise Service  
Monthly Report for Jul 2022

---

**Table of Contents**

<b>SUMMARY</b> .....	<b>3</b>
<b>AIRCRAFT LDN</b> .....	<b>4</b>
<b>AIRCRAFT OPERATIONS</b> .....	<b>5</b>
<b>UNCORRELATED AIRCRAFT</b> .....	<b>7</b>
<b>CALIBRATION REPORT</b> .....	<b>9</b>



Wellington International Airport  
Managed Noise Service  
Monthly Report for Jul 2022

---

## Summary

This report contains the information required by WIAL as part of the Envirosuite Managed Noise Service Agreement. The month of July saw data collected from all three RMTs with exceptions as follows:

RMT 1 missed one hourly record on 3 days - 22, 25 and 29 July.

RMT 2 missed one hourly record on 2 days - 22 and 29 July.

RMT 3 missed 1 hour on 29 July.

Wellington International Airport  
Managed Noise Service  
Monthly Report for Jul 2022

## Aircraft LDN

**Daily LDN Table**  
**Jul 1, 2022 to Jul 31, 2022**

	<b>RMT 1 Rongotai</b>	<b>RMT 2 Maupuia</b>	<b>RMT 3 Kekerenga</b>
01-Jul-22	54.6	57.8	55.3
02-Jul-22	53.7	57.0	55.6
03-Jul-22	53.7	57.6	54.5
04-Jul-22	55.1	57.5	55.7
05-Jul-22	54.5	56.8	56.0
06-Jul-22	57.4	55.1	54.4
07-Jul-22	54.4	57.9	55.3
08-Jul-22	58.4	58.0	58.4
09-Jul-22	57.2	55.9	58.1
10-Jul-22	57.5	54.2	53.4
11-Jul-22	55.6	53.9	53.6
12-Jul-22	57.0	58.2	56.0
13-Jul-22	57.3	55.7	57.4
14-Jul-22	56.7	57.5	54.6
15-Jul-22	57.0	55.9	54.5
16-Jul-22	52.7	54.9	54.1
17-Jul-22	56.4	56.1	57.3
18-Jul-22	61.5	0.0	58.9
19-Jul-22	58.4	57.3	57.9
20-Jul-22	57.3	57.5	54.8
21-Jul-22	53.7	53.7	55.9
22-Jul-22	59.1	58.1	54.5
23-Jul-22	55.7	53.7	52.4
24-Jul-22	54.2	57.9	54.4
25-Jul-22	57.0	57.7	54.3
26-Jul-22	56.7	56.8	55.2
27-Jul-22	56.5	57.0	55.6
28-Jul-22	53.6	58.9	55.8
29-Jul-22	53.3	59.2	55.5
30-Jul-22	52.9	58.5	55.6
31-Jul-22	56.9	57.5	57.9

Wellington International Airport  
Managed Noise Service  
Monthly Report for Jul 2022

---

## Aircraft Operations

**Operations Analysis**  
Jul 1, 2022 to Jul 31, 2022

Operation Type	Day	Night	Total
Arrival	3299	123	3422
Departure	3205	164	3369
<b>Total</b>	<b>6504</b>	<b>287</b>	<b>6791</b>

Jet	Day	Night	Total
A20N	119	110	229
A21N	19	3	22
A320 - Airbus - A320	1709	26	1735
B38M	18	0	18
B738 - Boeing - 737-800	121	14	135
B752 - Boeing - 757-200	18	0	18
BE40 - Beech - Beechjet 400/T-1 Jayhawk	4	0	4
C25A	7	0	7
C25B	2	0	2
C25C	2	0	2
C510 - CESSNA CITIATION MUSTANG	29	2	31
C680 - CESSNA - 680 Citation Sovereign L2J/M	2	0	2
CL60 - Canadair Bombardier - CL600/610 Challenger	8	0	8
F2TH - Dassault-Breguet - Falcon 2000	2	0	2
FA50 - Dassault-Breguet - Falcon 50, Mystere 50	20	0	20
(T-16)			
GLEX - Bombardier GLOBAL EXPRESS/Sentinel	6	0	6
GLF5 - Gulfstream - Gulfstream 5	1	0	1
GLF6	1	0	1
LJ45 - Gates Learjet - Learjet 45	2	0	2
<b>Total</b>	<b>2090</b>	<b>155</b>	<b>2245</b>

Wellington International Airport  
Managed Noise Service  
Monthly Report for Jul 2022

<b>Turboprop</b>	<b>Day</b>	<b>Night</b>	<b>Total</b>
AT75 - Aerospatiale/Aeritalia - ATR-72-500	18	0	18
AT76 - Aerospatiale/Aeritalia - ATR-72-600	959	35	994
B350 - Beech - Super King Air 350	21	3	24
BE20 - Beech - Super King Air 200, 1300	160	10	170
BE9L - Beech - KingAir90, A90 to E90 (T-44, V-C6), Taurus 90	28	2	30
C130 - Lockheed - Hercules, Spectre	10	0	10
C208 - Cessna - Caravan 1- 208,(Super) Cargomaster, Grand Caravan (U27)	444	31	475
CN35	2	0	2
DH8C - Dehavilland - Dash 8, DHC8 - 300	1904	1	1905
JS31 - British Aerospace (BAe) - BAe-3100 Jetstream 31	2	0	2
JS32 - British Aerospace (BAe) - BAe-3200 Jetstream Super 31	140	12	152
MU2 - Mitsubishi - MU-2, Marquise, Solitaire	3	0	3
PAY4 - Piper - Cheyenne 400	2	0	2
PC12 - Pilatus Flugzeugwerke Ag - PC-12	435	36	471
<b>Total</b>	<b>4128</b>	<b>130</b>	<b>4258</b>

<b>Others</b>	<b>Day</b>	<b>Night</b>	<b>Total</b>
B429	4	0	4
BK17	9	1	10
C152 - Cessna - Cessna 152	1	0	1
C172 - Cessna - Skyhawk 172/Cutlass/Mescalero	20	0	20
C185 - Cessna - Skywagon 185 (U-17A/B)	2	0	2
C402 - Cessna - Cessna 401, 402, Utiliner, Businessliner	3	0	3
DA40	2	0	2
DA42 - DA-42 Diamond Twin Star	2	0	2
EC30	1	0	1
GA8	31	0	31
NH90 - NH90 Caiman	8	0	8
P28A - Piper - Cherokee, Archer, Warrior, Cadet, Cruiser (PA-28-140/150/151/160/161/180/181)	36	1	37
PA27 - Piper - Aztec. Turbo Aztec	1	0	1
PA34 - Piper - Seneca 2/3	19	0	19
PA38 - Piper - Tomahawk	43	0	43
PA44 - Piper - Seminole, Turbo Seminole	11	0	11
PA46 - Piper - Malibu, Malibu Mirage	1	0	1
PNR3	2	0	2
SR22 - Cirrus - SR-22	6	0	6
SW4B	9	0	9
	75	0	75
<b>Total</b>	<b>286</b>	<b>2</b>	<b>288</b>

<b>Category</b>	<b>Day</b>	<b>Night</b>	<b>Total</b>
Jet	2090	155	2245
Turboprop	4128	130	4258
Other	286	2	288
<b>Total</b>	<b>6504</b>	<b>287</b>	<b>6791</b>

Wellington International Airport  
Managed Noise Service  
Monthly Report for Jul 2022

---

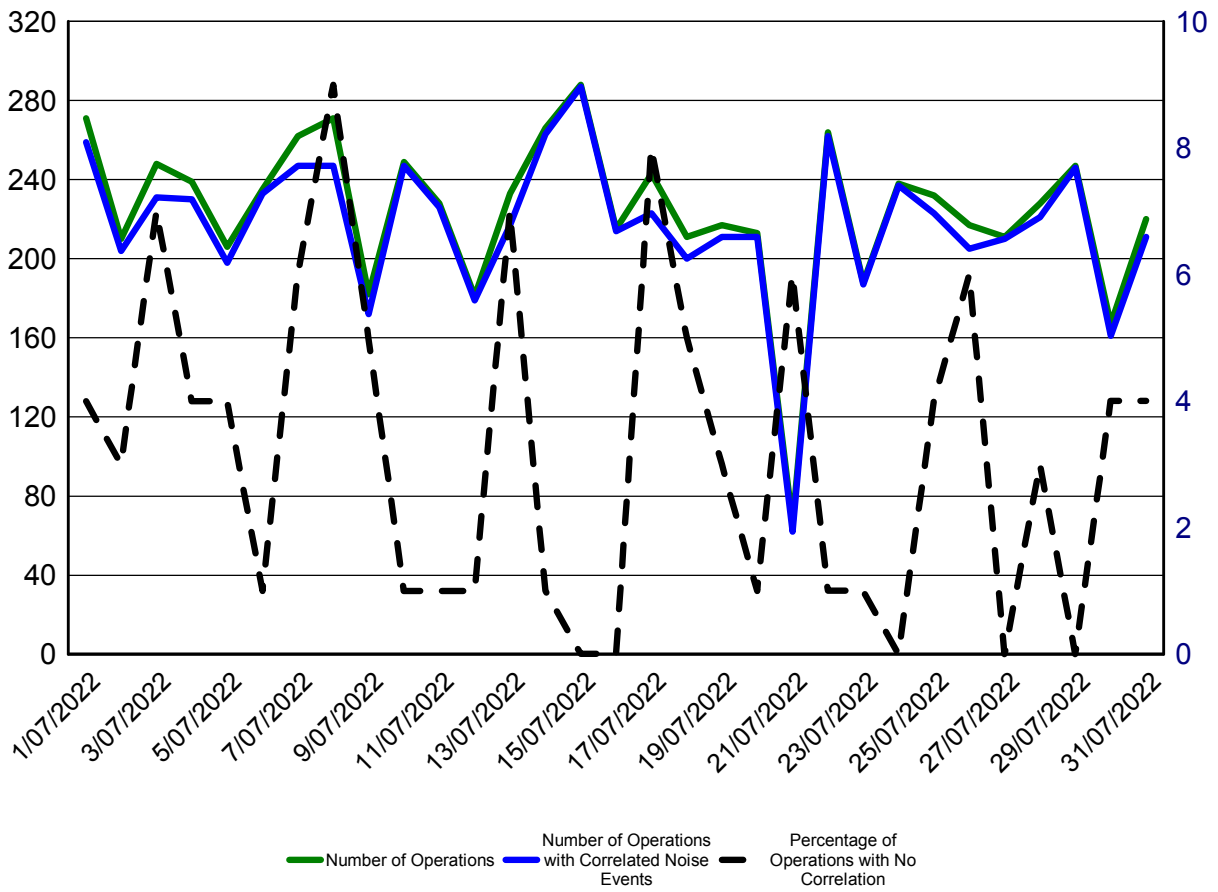
## Uncorrelated Aircraft

**Uncorrelated Aircraft Analysis**  
**Jul 1, 2022 to Jul 31, 2022**

Date	Number of Operations	Operations with Correlated Noise Events	Percentage of Operations With No Correlated Noise Events	Jets with No Correlated Noise Events
01-Jul-2022	271	259	4%	1
02-Jul-2022	210	204	3%	0
03-Jul-2022	248	231	7%	0
04-Jul-2022	239	230	4%	1
05-Jul-2022	206	198	4%	1
06-Jul-2022	235	233	1%	1
07-Jul-2022	262	247	6%	1
08-Jul-2022	271	247	9%	2
09-Jul-2022	182	172	5%	0
10-Jul-2022	249	247	1%	1
11-Jul-2022	228	226	1%	1
12-Jul-2022	181	179	1%	0
13-Jul-2022	233	217	7%	1
14-Jul-2022	266	263	1%	0
15-Jul-2022	288	287	0%	0
16-Jul-2022	215	214	0%	0
17-Jul-2022	243	223	8%	3
18-Jul-2022	211	200	5%	1
19-Jul-2022	217	211	3%	0
20-Jul-2022	213	211	1%	1
21-Jul-2022	66	62	6%	1
22-Jul-2022	264	262	1%	0
23-Jul-2022	188	187	1%	0
24-Jul-2022	238	237	0%	0
25-Jul-2022	232	223	4%	0
26-Jul-2022	217	205	6%	2
27-Jul-2022	211	210	0%	0
28-Jul-2022	228	221	3%	0
29-Jul-2022	247	246	0%	0
30-Jul-2022	167	161	4%	3
31-Jul-2022	220	211	4%	2

Wellington International Airport  
 Managed Noise Service  
 Monthly Report for Jul 2022

This graph shown below provides a summary of the noise correlation at Wellington Airport during July 2022



Wellington International Airport  
Managed Noise Service  
Monthly Report for Jul 2022

### Calibration Report

	RMT 1			RMT 2			RMT 3		
	Measured	Diff.	Status	Measured	Diff.	Status	Measured	Diff.	Status
01-Jul-2022	88.2	0.1	SUCCESS	87.8	0.3	SUCCESS	88.0	0.0	SUCCESS
02-Jul-2022	88.2	0.1	SUCCESS	87.8	0.3	SUCCESS	88.1	0.1	SUCCESS
03-Jul-2022	88.2	0.1	SUCCESS	87.8	0.3	SUCCESS	88.1	0.1	SUCCESS
04-Jul-2022	88.2	0.1	SUCCESS	87.8	0.3	SUCCESS	88.1	0.1	SUCCESS
05-Jul-2022	88.2	0.1	SUCCESS	87.8	0.3	SUCCESS	88.1	0.1	SUCCESS
06-Jul-2022	88.2	0.1	SUCCESS	87.7	0.2	SUCCESS	88.1	0.1	SUCCESS
07-Jul-2022	88.2	0.1	SUCCESS	87.7	0.2	SUCCESS	88.0	0.0	SUCCESS
08-Jul-2022	88.2	0.1	SUCCESS	87.8	0.3	SUCCESS	88.1	0.1	SUCCESS
09-Jul-2022	88.2	0.1	SUCCESS	87.9	0.4	SUCCESS	88.1	0.1	SUCCESS
10-Jul-2022	88.2	0.1	SUCCESS	87.8	0.3	SUCCESS	88.0	0.0	SUCCESS
11-Jul-2022	88.1	0.0	SUCCESS	87.7	0.2	SUCCESS	88.0	0.0	SUCCESS
12-Jul-2022	88.2	0.1	SUCCESS	87.8	0.3	SUCCESS	88.1	0.1	SUCCESS
13-Jul-2022	88.2	0.1	SUCCESS	88.0	0.5	SUCCESS	88.1	0.1	SUCCESS
14-Jul-2022	88.2	0.1	SUCCESS	87.8	0.3	SUCCESS	88.1	0.1	SUCCESS
15-Jul-2022	88.2	0.1	SUCCESS	87.7	0.2	SUCCESS	88.0	0.0	SUCCESS
16-Jul-2022	88.1	0.0	SUCCESS	87.7	0.2	SUCCESS	88.0	0.0	SUCCESS
17-Jul-2022	88.2	0.1	SUCCESS	87.8	0.3	SUCCESS	88.0	0.0	SUCCESS
18-Jul-2022	88.2	0.1	SUCCESS	87.8	0.3	SUCCESS	88.1	0.1	SUCCESS
19-Jul-2022	88.2	0.1	SUCCESS	87.8	0.3	SUCCESS	88.1	0.1	SUCCESS
20-Jul-2022	88.2	0.1	SUCCESS	87.7	0.2	SUCCESS	88.1	0.1	SUCCESS
21-Jul-2022	88.2	0.1	SUCCESS	87.8	0.3	SUCCESS	88.1	0.1	SUCCESS
22-Jul-2022	88.1	0.0	SUCCESS	87.8	0.3	SUCCESS	88.0	0.0	SUCCESS
23-Jul-2022	88.1	0.0	SUCCESS	87.7	0.2	SUCCESS	88.0	0.0	SUCCESS
24-Jul-2022	88.1	0.0	SUCCESS	87.7	0.2	SUCCESS	88.0	0.0	SUCCESS
25-Jul-2022	88.1	0.0	SUCCESS	87.7	0.2	SUCCESS	88.0	0.0	SUCCESS
26-Jul-2022	88.2	0.1	SUCCESS	87.7	0.2	SUCCESS	88.0	0.0	SUCCESS
27-Jul-2022	88.2	0.1	SUCCESS	87.8	0.3	SUCCESS	88.0	0.0	SUCCESS
28-Jul-2022	88.2	0.1	SUCCESS	87.8	0.3	SUCCESS	88.0	0.0	SUCCESS
29-Jul-2022	88.2	0.1	SUCCESS	87.8	0.3	SUCCESS	88.0	0.0	SUCCESS
30-Jul-2022	88.2	0.1	SUCCESS	87.8	0.3	SUCCESS	88.1	0.1	SUCCESS
31-Jul-2022	88.1	0.0	SUCCESS	87.8	0.3	SUCCESS	88.1	0.1	SUCCESS



Wellington International Airport  
Managed Noise Service  
Monthly Report for Aug 2022

---

**WELLINGTON INTERNATIONAL**  
**AIRPORT LIMITED**

Managed Noise Service

Monthly Report: Aug 2022

Provided By: Envirosuite  
Date: 6 September, 2022



Wellington International Airport  
Managed Noise Service  
Monthly Report for Aug 2022

---

**Table of Contents**

<b>SUMMARY</b> .....	<b>3</b>
<b>AIRCRAFT LDN</b> .....	<b>4</b>
<b>AIRCRAFT OPERATIONS</b> .....	<b>5</b>
<b>UNCORRELATED AIRCRAFT</b> .....	<b>7</b>
<b>CALIBRATION REPORT</b> .....	<b>9</b>

Wellington International Airport  
Managed Noise Service  
Monthly Report for Aug 2022

---

## Summary

This report contains the information required by WIAL as part of the Envirosuite Managed Noise Service Agreement. The month of August saw data collected from all three RMTs with one exception:

RMT 2 missed one hourly record on 31-Aug-2022.

Wellington International Airport  
Managed Noise Service  
Monthly Report for Aug 2022

---

## Aircraft LDN

**Daily LDN Table**  
**Aug 1, 2022 to Aug 31, 2022**

	<b>RMT 1 Rongotai</b>	<b>RMT 2 Maupuia</b>	<b>RMT 3 Kekerenga</b>
01-Aug-22	55.4	58.1	56.7
02-Aug-22	58.5	41.9	59.1
03-Aug-22	55.8	59.3	58.3
04-Aug-22	54.5	57.7	55.0
05-Aug-22	56.2	59.2	56.7
06-Aug-22	56.8	58.5	58.2
07-Aug-22	56.7	57.4	55.4
08-Aug-22	61.1	61.2	58.7
09-Aug-22	57.8	57.8	54.6
10-Aug-22	56.7	54.7	53.9
11-Aug-22	57.4	55.5	53.7
12-Aug-22	55.5	56.5	55.2
13-Aug-22	53.9	54.7	54.7
14-Aug-22	53.9	58.0	54.8
15-Aug-22	53.6	57.8	56.0
16-Aug-22	54.1	57.9	55.9
17-Aug-22	54.4	58.5	56.1
18-Aug-22	56.7	59.6	58.2
19-Aug-22	56.6	58.8	57.4
20-Aug-22	53.6	57.7	57.0
21-Aug-22	54.1	53.3	56.5
22-Aug-22	55.3	57.4	54.2
23-Aug-22	55.6	55.6	54.8
24-Aug-22	56.1	58.2	56.9
25-Aug-22	53.0	55.1	54.6
26-Aug-22	59.6	57.9	56.4
27-Aug-22	56.3	54.0	52.8
28-Aug-22	57.7	54.7	53.4
29-Aug-22	55.9	54.7	54.0
30-Aug-22	54.3	57.8	54.6
31-Aug-22	55.0	57.6	55.1

Wellington International Airport  
Managed Noise Service  
Monthly Report for Aug 2022

---

## Aircraft Operations

**Operations Analysis**  
**Aug 1, 2022 to Aug 31, 2022**

Operation Type	Day	Night	Total
Arrival	3248	120	3368
Departure	3146	164	3310
<b>Total</b>	<b>6394</b>	<b>284</b>	<b>6678</b>

Jet	Day	Night	Total
A20N	93	104	197
A21N	6	0	6
A320 - Airbus - A320	1774	31	1805
B38M	18	0	18
B738 - Boeing - 737-800	109	25	134
B752 - Boeing - 757-200	13	1	14
C25A	16	0	16
C510 - CESSNA CITIATION MUSTANG	35	6	41
C680 - CESSNA - 680 Citation Sovereign L2J/M	2	0	2
CL60 - Canadair Bombardier - CL600/610 Challenger	9	0	9
E50P	2	0	2
FA50 - Dassault-Breguet - Falcon 50, Mystere 50 (T-16)	9	3	12
FA7X	4	0	4
GLEX - Bombardier GLOBAL EXPRESS/Sentinel	2	0	2
GLF5 - Gulfstream - Gulfstream 5	3	0	3
<b>Total</b>	<b>2095</b>	<b>170</b>	<b>2265</b>

Wellington International Airport  
Managed Noise Service  
Monthly Report for Aug 2022

<b>Turboprop</b>	<b>Day</b>	<b>Night</b>	<b>Total</b>
AT75 - Aerospatiale/Aeritalia - ATR-72-500	18	0	18
AT76 - Aerospatiale/Aeritalia - ATR-72-600	925	24	949
B350 - Beech - Super King Air 350	34	0	34
BE20 - Beech - Super King Air 200, 1300	161	11	172
BE9L - Beech - KingAir90, A90 to E90 (T-44, V-C6), Taurus 90	28	0	28
C130 - Lockheed - Hercules, Spectre	4	0	4
C208 - Cessna - Caravan 1- 208,(Super) Cargomaster, Grand Caravan (U27)	449	37	486
C27J	2	0	2
C30J - C-130J Hercules	1	0	1
C441 - Cessna - Conquest/Conquest 2 - 441	20	0	20
DH8C - Dehavilland - Dash 8, DHC8 - 300	1933	0	1933
JS31 - British Aerospace (BAe) - BAe-3100 Jetstream 31	14	0	14
JS32 - British Aerospace (BAe) - BAe-3200 Jetstream Super 31	78	16	94
MU2 - Mitsubishi - MU-2, Marquise, Solitaire	3	3	6
PAY4 - Piper - Cheyenne 400	2	0	2
PC12 - Pilatus Flugzeugwerke Ag - PC-12	345	16	361
SF34 - Saab - SF-340	4	0	4
<b>Total</b>	<b>4021</b>	<b>107</b>	<b>4128</b>

<b>Others</b>	<b>Day</b>	<b>Night</b>	<b>Total</b>
A109	1	0	1
BE36 - Beech - Bonanza 36	2	0	2
BK17	30	2	32
C152 - Cessna - Cessna 152	2	0	2
C172 - Cessna - Skyhawk 172/Cutlass/Mescalero	23	0	23
C185 - Cessna - Skywagon 185 (U-17A/B)	2	0	2
DA40	2	0	2
DA42 - DA-42 Diamond Twin Star	6	0	6
EC45	2	0	2
GA8	2	0	2
H60	4	0	4
M9	5	0	5
NH90 - NH90 Caiman	5	0	5
P28A - Piper - Cherokee, Archer, Warrior, Cadet, Cruiser (PA-28-140/150/151/160/161/180/181)	25	2	27
PA34 - Piper - Seneca 2/3	5	0	5
PA38 - Piper - Tomahawk	64	0	64
PA44 - Piper - Seminole, Turbo Seminole	5	0	5
R22	1	0	1
SR22 - Cirrus - SR-22	8	0	8
SW4B	10	0	10
	74	3	77
<b>Total</b>	<b>278</b>	<b>7</b>	<b>285</b>

<b>Category</b>	<b>Day</b>	<b>Night</b>	<b>Total</b>
Jet	2095	170	2265
Turboprop	4021	107	4128
Other	278	7	285
<b>Total</b>	<b>6394</b>	<b>284</b>	<b>6678</b>

Wellington International Airport  
Managed Noise Service  
Monthly Report for Aug 2022

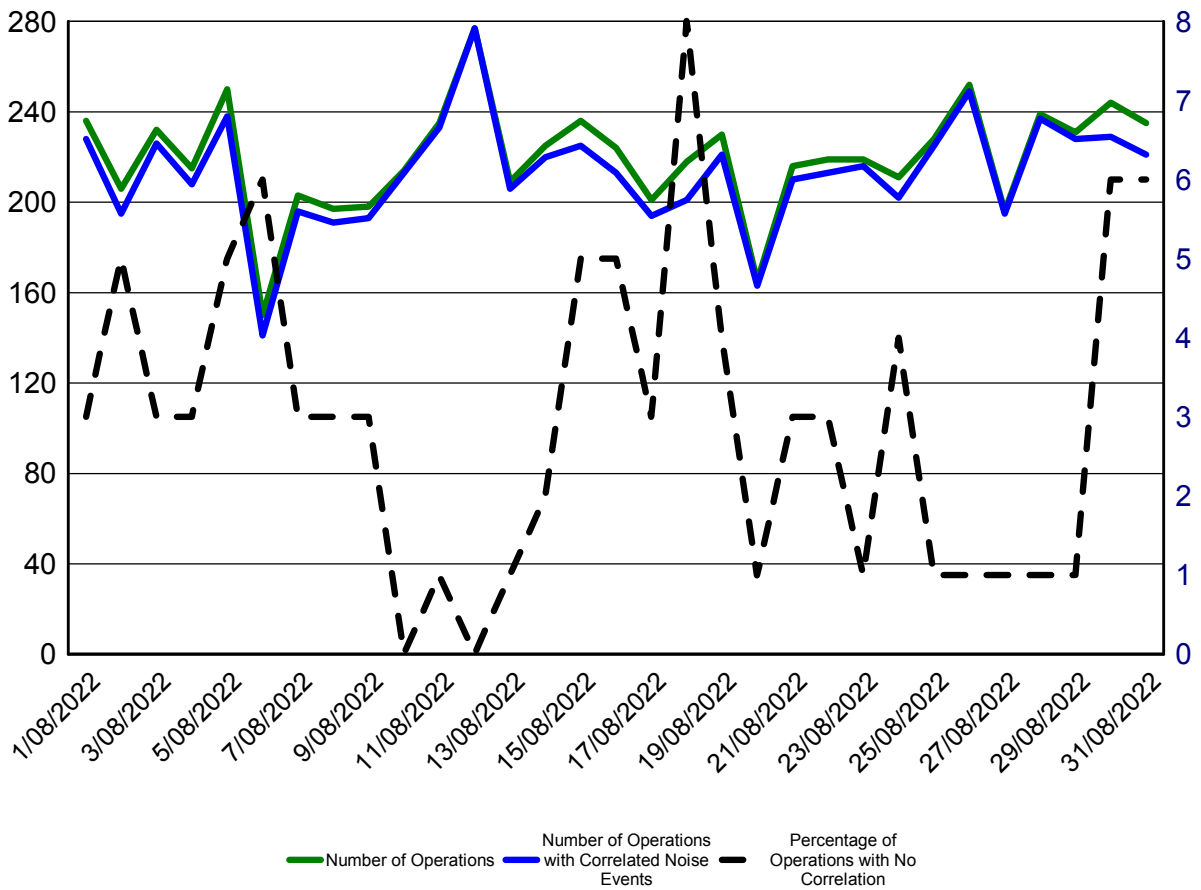
## Uncorrelated Aircraft

### Uncorrelated Aircraft Analysis Aug 1, 2022 to Aug 31, 2022

Date	Number of Operations	Operations with Correlated Noise Events	Percentage of Operations With No Correlated Noise Events	Jets with No Correlated Noise Events
01-Aug-2022	236	228	3%	0
02-Aug-2022	206	195	5%	1
03-Aug-2022	232	226	3%	1
04-Aug-2022	215	208	3%	0
05-Aug-2022	250	238	5%	1
06-Aug-2022	150	141	6%	1
07-Aug-2022	203	196	3%	0
08-Aug-2022	197	191	3%	1
09-Aug-2022	198	193	3%	0
10-Aug-2022	214	213	0%	1
11-Aug-2022	235	233	1%	1
12-Aug-2022	277	277	0%	0
13-Aug-2022	209	206	1%	0
14-Aug-2022	225	220	2%	1
15-Aug-2022	236	225	5%	1
16-Aug-2022	224	213	5%	2
17-Aug-2022	201	194	3%	0
18-Aug-2022	218	201	8%	1
19-Aug-2022	230	221	4%	0
20-Aug-2022	165	163	1%	0
21-Aug-2022	216	210	3%	1
22-Aug-2022	219	213	3%	1
23-Aug-2022	219	216	1%	1
24-Aug-2022	211	202	4%	2
25-Aug-2022	228	225	1%	1
26-Aug-2022	252	249	1%	0
27-Aug-2022	196	195	1%	0
28-Aug-2022	239	237	1%	0
29-Aug-2022	231	228	1%	0
30-Aug-2022	244	229	6%	4
31-Aug-2022	235	221	6%	2

Wellington International Airport  
 Managed Noise Service  
 Monthly Report for Aug 2022

This graph shown below provides a summary of the noise correlation at Wellington Airport during August 2022



Wellington International Airport  
Managed Noise Service  
Monthly Report for Aug 2022

**Calibration Report**

	RMT 1			RMT 2			RMT 3		
	Measured	Diff.	Status	Measured	Diff.	Status	Measured	Diff.	Status
01-Aug-2022	88.2	0.1	SUCCESS	87.7	0.2	SUCCESS	88.0	0.0	SUCCESS
02-Aug-2022	88.1	0.0	SUCCESS	87.7	0.2	SUCCESS	88.1	0.1	SUCCESS
03-Aug-2022	88.1	0.0	SUCCESS	87.8	0.3	SUCCESS	88.1	0.1	SUCCESS
04-Aug-2022	88.1	0.0	SUCCESS	87.7	0.2	SUCCESS	88.1	0.1	SUCCESS
05-Aug-2022	88.1	0.0	SUCCESS	87.8	0.3	SUCCESS	88.1	0.1	SUCCESS
06-Aug-2022	88.1	0.0	SUCCESS	87.8	0.3	SUCCESS	88.1	0.1	SUCCESS
07-Aug-2022	88.1	0.0	SUCCESS	87.7	0.2	SUCCESS	88.0	0.0	SUCCESS
08-Aug-2022	88.1	0.0	SUCCESS	87.6	0.1	SUCCESS	88.0	0.0	SUCCESS
09-Aug-2022	88.1	0.0	SUCCESS	87.6	0.1	SUCCESS	88.0	0.0	SUCCESS
10-Aug-2022	88.0	-0.1	SUCCESS	87.6	0.1	SUCCESS	88.0	0.0	SUCCESS
11-Aug-2022	88.0	-0.1	SUCCESS	87.6	0.1	SUCCESS	88.0	0.0	SUCCESS
12-Aug-2022	88.0	-0.1	SUCCESS	87.6	0.1	SUCCESS	88.0	0.0	SUCCESS
13-Aug-2022	88.0	-0.1	SUCCESS	87.6	0.1	SUCCESS	88.0	0.0	SUCCESS
14-Aug-2022	88.1	0.0	SUCCESS	87.6	0.1	SUCCESS	88.0	0.0	SUCCESS
15-Aug-2022	88.1	0.0	SUCCESS	87.6	0.1	SUCCESS	88.0	0.0	SUCCESS
16-Aug-2022	88.1	0.0	SUCCESS	87.6	0.1	SUCCESS	88.0	0.0	SUCCESS
17-Aug-2022	88.1	0.0	SUCCESS	87.6	0.1	SUCCESS	88.0	0.0	SUCCESS
18-Aug-2022	88.1	0.0	SUCCESS	87.7	0.2	SUCCESS	88.1	0.1	SUCCESS
19-Aug-2022	88.1	0.0	SUCCESS	87.7	0.2	SUCCESS	88.0	0.0	SUCCESS
20-Aug-2022	88.1	0.0	SUCCESS	87.6	0.1	SUCCESS	88.0	0.0	SUCCESS
21-Aug-2022	88.1	0.0	SUCCESS	87.7	0.2	SUCCESS	88.1	0.1	SUCCESS
22-Aug-2022	88.1	0.0	SUCCESS	87.6	0.1	SUCCESS	88.0	0.0	SUCCESS
23-Aug-2022	88.0	-0.1	SUCCESS	87.6	0.1	SUCCESS	88.0	0.0	SUCCESS
24-Aug-2022	88.1	0.0	SUCCESS	87.7	0.2	SUCCESS	88.1	0.1	SUCCESS
25-Aug-2022	88.0	-0.1	SUCCESS	87.6	0.1	SUCCESS	88.0	0.0	SUCCESS
26-Aug-2022	88.1	0.0	SUCCESS	87.6	0.1	SUCCESS	88.0	0.0	SUCCESS
27-Aug-2022	88.0	-0.1	SUCCESS	87.6	0.1	SUCCESS	88.0	0.0	SUCCESS
28-Aug-2022	88.0	-0.1	SUCCESS	87.6	0.1	SUCCESS	88.0	0.0	SUCCESS
29-Aug-2022	88.0	-0.1	SUCCESS	87.6	0.1	SUCCESS	88.0	0.0	SUCCESS
30-Aug-2022	88.1	0.0	SUCCESS	87.6	0.1	SUCCESS	88.0	0.0	SUCCESS
31-Aug-2022	88.1	0.0	SUCCESS	87.7	0.2	SUCCESS	88.0	0.0	SUCCESS



# Wellington Airport Noise Treatment (WANT) Update

## August 2022

### Quieter Homes Programme (as at 31 August 2022)

NB: Updates to numbers in orange

	Streets within Area (refer Rollout map on website)	Offers made	Application forms received	Site inspections undertaken	Acoustic design prepared	Legal agreements signed	Acoustic treatment installed	Acoustic treatment works underway	Current Status of Area
<b>Area 1</b>	Bridge St, Pt of Wexford Rd	38 (2016)	37	37	37	34	34	0	Complete.
<b>Area 2</b>	Calabar Rd, Caledonia St, Pt of Wexford Rd	33 (2017)	30	35*	33	33	33	0	Near completion. Two properties left.
<b>Area 3</b>	Tirangi Rd, Coutts St	48 (2018)	41	39	34	26	25	1	Due for completion this year
<b>Area 4</b>	Miro St, Caledonia St, Kedah St, Pt of Tirangi Rd	48 (2021)	34	31	12	0	0	0	Site inspections nearly complete. Acoustic and architect designs underway
<b>Area 5</b>	Wexford Road, Tirangi Rd, Lonsdale Cres, Rongotai Road	77 (2023)							Currently scheduled to be offered in 2023
<b>Area 6</b>	Lonsdale Cres, Coutts St, Miro St, Kauri St, Hobart St, Caledonia St, Moa Point Rd, Kekerenga St, Maupuia Rd, Aranui St, Zaida Way, Akaroa Drive	383 (2024)							Currently scheduled to be offered in 2024

\* Includes 5 WIAL owned properties (where application forms not required). All 30 properties that are not WIAL owned have been completed in Area 2.